

**LION** *Quick  
Action* **SCALES**



*Quick* *Action*

HERBERT & SONS, LTD. 687, WEST SMITHFIELD, LONDON.E.C.1

# ALL ABOUT "LIONS"

**I**N these times of keen competition, economy and scientific trading, scales have become the most vital part of all Food Shop equipment. Your profits depend not only upon the price you ask for your goods, but upon **ACCURATE** weighing. Money is exchanged for goods, and goods for money ; you want the exchange to be accurate and fair, pleasing to you, and satisfactory to your customers. Never before has their confidence been more necessary or more important.

The type of scale you instal will decide whether you sell your goods at a profit, give your customers entire satisfaction, and thus build goodwill, or lose what is yours by right and dissipate valuable goodwill.

"LION" Quick Action Scales are used by the leading food shops in this country and owe their great popularity to the fact that they are **THE MOST ACCURATE COUNTER SCALES MADE**, and are **LIKED** by the British public who have complete confidence in them.

Read through the following pages, and it will be apparent why the installation of "LION" Quick Action Scales will pay you.



# HERBERT & SONS, LTD

MR. A. F. HERBERT



MANAGING DIRECTOR



MR. J. MACNAUGHTON  
SECRETARY



MR. L. BAGRIT  
MANAGER

Established 1760

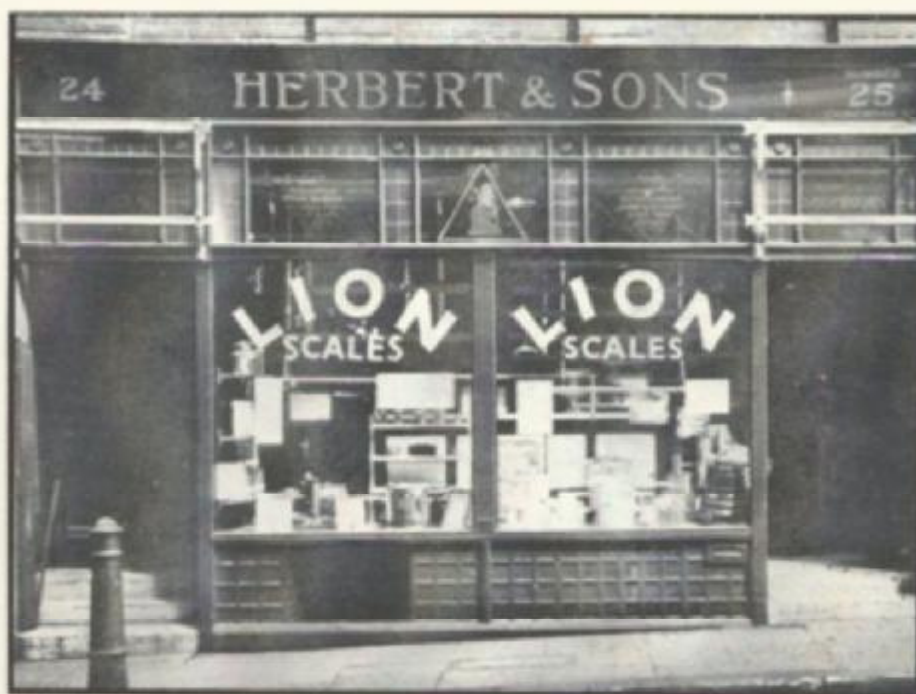
6 & 7, West Smithfield, - - - - London, E.C.1.  
Scale Showrooms & Works—204 & 206, Goswell Road, E.C.1.  
and Mulberry Place, E.C.1.  
'Phone: Central 8827 - - - - Private Exchange 5 lines.  
and Clerkenwell 5700 - - - - Private Exchange 2 lines.  
Telegrams: - - - - - Ryteweight, London.

HERBERT & SONS, LTD. 6 & 7, WEST SMITHFIELD, LONDON.E.C.1

# SHOWROOMS



Head Offices at 6/7, West Smithfield, E.C.1, showing Sundries Department and Showrooms.



Branch Offices & Showrooms, 24/25 Cowcross St., London, E.C.1

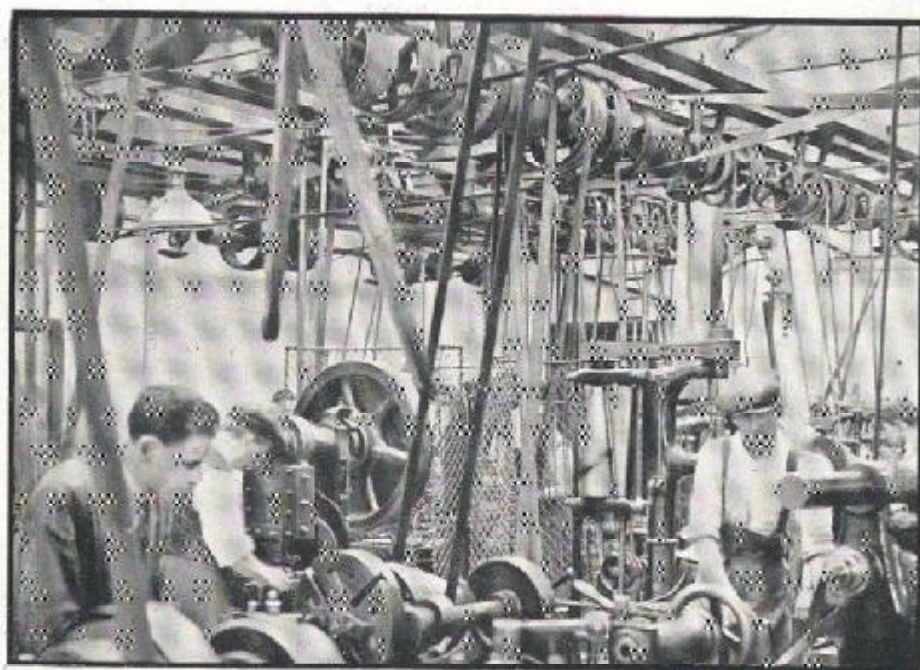
HERBERT & SONS, LTD. 6 & 7, WEST SMITHFIELD, LONDON, E.C.1



# HERBERT & SONS, LTD



Scale Department, 204/206, Goswell Road, London, E.C.1



A Corner of a Machine Shop at Mulberry Place, Goswell Road, London, E.C.1

HERBERT & SONS, LTD. 6 & 7, WEST SMITHFIELD, LONDON, E.C.1

# WORKS



A part of the Forge at Mulberry Place, Goswell Road, E.C.1



A part of one of the Assembly Bays at Goswell Road, E.C.1



# LION *Quick Action* SCALE



Viewed from any angle the "LION" Quick Action Scale represents the apex of perfection in modern weighing instruments. Designed from the point of view of the up-to-date food shop it is famed for its Accuracy, Sensitiveness, Speed, Beauty and Cleanliness. It is a scale that will please you and satisfy your customers. THE SCALE OF THE FUTURE.

HERBERT & SONS, LTD. 6 & 7, WEST SMITHFIELD, LONDON.E.C.1

# SENSITIVE



THE "LION" QUICK ACTION SCALE IS THE WORLD'S MOST ACCURATE AND SENSITIVE SCALE.

It is 3 times more sensitive, therefore 3 times more accurate, and 3 times more durable than any other scale made for shop use.

This photograph shows a "LION" Scale of 20 lbs. capacity being taken right down with the insignificant weight of a pound note. This high degree of sensitiveness means accuracy absolute.

HERBERT & SONS, LTD. 6 & 7, WEST SMITHFIELD, LONDON, E.C.1



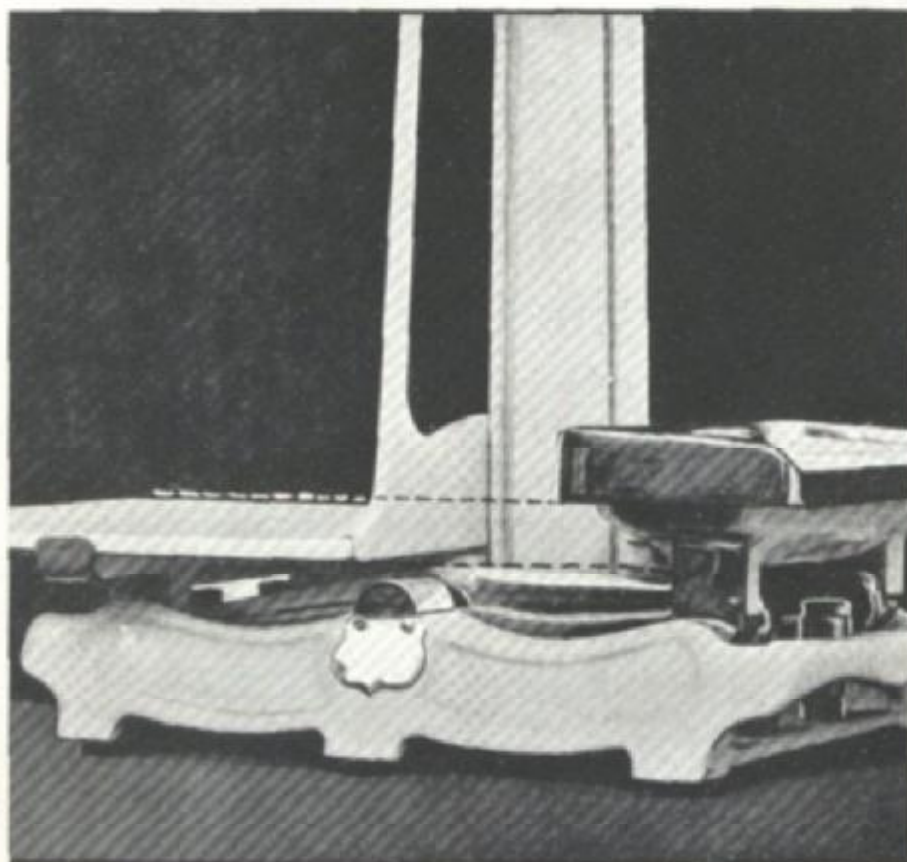
# LION *Quick Action* SCALE



The "LION" Cub Scale shown here is made for fast weighing of comparatively small quantities. It is especially suitable for the Grocer in 7 and 10 lb. capacity ; Dairyman, 4 and 7 lb.; Provision Merchant, 7 and 10 lb. ; and Baker, 7 and 10 lb. Highly sensitive, accurate, handsome, durable, and fast, it is a machine which will give lasting service, and satisfaction.

HERBERT & SONS, LTD. 6 & 7, WEST SMITHFIELD, LONDON.E.C.1

# SAVES OVERWEIGHT



A unique feature of the "LION" Quick Action Scale is that it turns at Weight, NOT Over-weight. This photograph illustrates the normal position of a "LION" Quick Action Scale when in balance. Note the relative positions of the shock-absorbing buffer stops under plate and weight board. The plate is always on "the turn" ready to fall the moment balance is achieved.

The extreme sensitivity and fine balance of the "LION" Quick Action Scale will save the overweight, which is required in ordinary scales to send the plate right down. Only "LION" design and craftsmanship make this possible.

"LION" Quick Action Scales will show a definite saving against any other type of weighing machine.

This picture proves what "LION" Scales can save in YOUR business.



# LION Quick Action SCALE



This famous model "LION" Quick Action Scale is finished in untarnishable Gold Bronze and is fitted with China Plate and Wood Weight-board. Highly sensitive, speedy and accurate, it is made in all sizes to suit all trades.

The following capacities are recommended :—

Butchers : 20 lb., 30 lb., 40 lb. Grocers : 7 lb., 10 lb., 20 lb.

Provision Merchants : 7 lb., 10 lb., 20 lb. Bakers : 7 lb.,

10 lb., 20 lb. Dairymen : 4 lb., 7 lb., 10 lb.

HERBERT & SONS, LTD. 6 & 7, WEST SMITHFIELD, LONDON, E.C.1

# SAVES MONEY

## WEIGHINGS PER DAY

		$\frac{1}{8}$ oz. waste per weighing				$\frac{1}{4}$ oz. waste per weighing			
Cost per lb.		1/-	1/6	2/-	3/-	1/-	1/6	2/-	3/-
Weighings per Day	30	£ s. d. 3 1 0	£ s. d. 4 11 6	£ s. d. 6 2 0	£ s. d. 9 3 0	£ s. d. 6 2 0	£ s. d. 9 3 0	£ s. d. 12 4 0	£ s. d. 18 6 0
	50	5 1 8	7 12 6	10 3 4	15 5 0	10 3 4	15 5 0	20 6 8	30 10 0
	100	10 3 4	15 5 0	20 6 8	30 10 0	20 6 8	30 10 0	40 13 4	61 0 0
	200	20 6 8	30 10 0	40 13 4	61 0 0	40 13 4	61 0 0	81 6 8	122 0 0
	300	30 10 0	45 15 0	61 0 0	91 10 0	61 0 0	91 10 0	122 0 0	183 0 0
	500	50 10 8	76 5 0	101 13 4	152 10 0	101 13 4	152 10 0	203 6 8	305 0 0

		$\frac{3}{8}$ oz. waste per weighing				$\frac{1}{2}$ oz. waste per weighing			
Cost p. lb.		1/-	1/6	2/-	3/-	1/-	1/6	2/-	3/-
Weighings per Day	30	£ s. d. 12 4 0	£ s. d. 18 6 0	£ s. d. 24 8 0	£ s. d. 36 12 0	£ s. d. 24 8 0	£ s. d. 36 12 0	£ s. d. 48 16 0	£ s. d. 73 4 0
	50	15 5 0	22 17 6	30 10 0	67 15 0	20 6 8	30 10 0	40 13 4	61 0 0
	100	30 10 0	45 15 0	61 0 0	135 10 0	40 13 4	61 0 0	81 6 8	122 0 0
	200	61 0 0	91 10 0	122 0 0	271 0 0	81 6 8	122 0 0	162 13 4	244 0 0
	300	91 10 0	137 5 0	183 0 0	406 10 0	122 0 0	183 0 0	244 0 6	366 0 0
	500	152 10 0	228 15 0	305 0 0	677 10 0	203 6 8	305 0 0	406 13 4	610 0 0

This table shows what a "LION" Quick Action Scale saves over a Scale that requires overweight to send the plate down.

"LION" Scales 'Turn' at weight, and therefore will save that wastage which would otherwise take place. Look at the above table, test your scale, and see what a "LION" can do for YOU.

You know that a fraction of error in your scales will amount to a big cumulative loss day by day. Appreciate that your scales are the most vitally important part of your equipment—then weigh the facts and you will realise the value of a "LION" QUICK ACTION SCALE to you.



# LION Quick Action SCALE



Finished in Gleaming White Porcelain Enamel of the very finest quality, with all exposed metal parts heavily Chromium-plated this "LION" Quick Action Scale represents the last word in weighing Instruments. Made in 7 lb., 10 lb., 20 lb. and 30 lb. capacities to suit all trades.

Sensitive, Accurate, Durable and Hygienic it will grace your counter as well as save money.

HERBERT & SONS, LTD., 687, WEST SMITHFIELD, LONDON, E.C.1

# SAVES LOSS

## SAVES LOSS OF NETT PROFIT



The White square in the centre represents the loss of  $\frac{1}{8}$  oz. per weighing. The Black portion shows how this loss is multiplied at 50 weighings per day in the course of twelve months. Few traders realise how a fractional loss for every weighing accumulates. "LION" Quick Action Scales prevent that loss.

All loss on weighing is loss of NETT profit.



# LION Quick Action SCALE

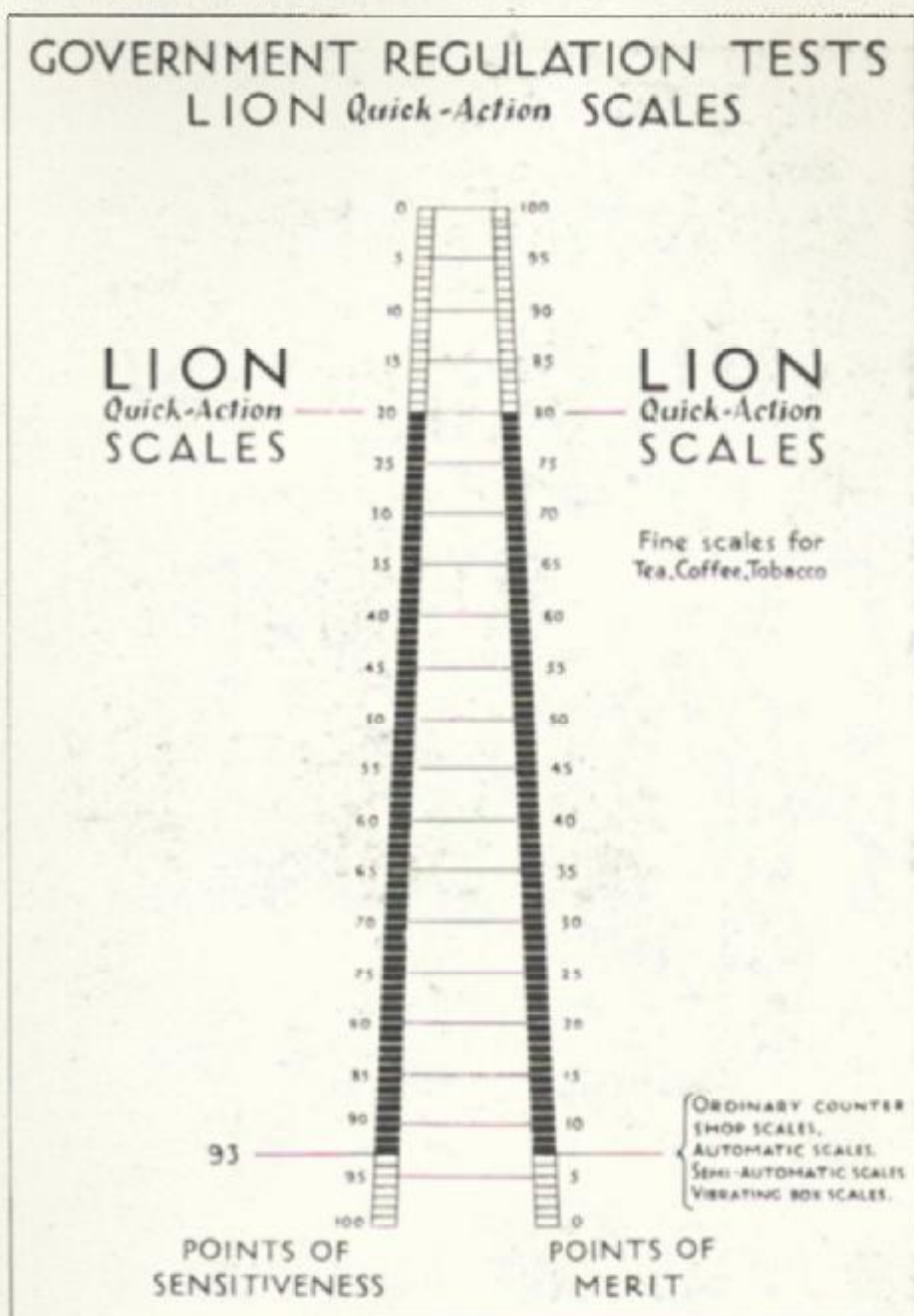


The Ideal Scale for the Fish Trade. Specially built to withstand rough usage, and fitted with shock absorbing buffer stops, it will remain sensitive and accurate under the most trying conditions. The bottomworks are designed to avoid the collection of Fish scales, dirt and moisture.

Finished in the finest White Porcelain Enamel with all exposed metal parts heavily Chromium-plated, it will retain its handsome appearance indefinitely.

HERBERT & SONS, LTD. 6 & 7, WEST SMITHFIELD, LONDON.E.C.1

# GOVERNMENT TESTS

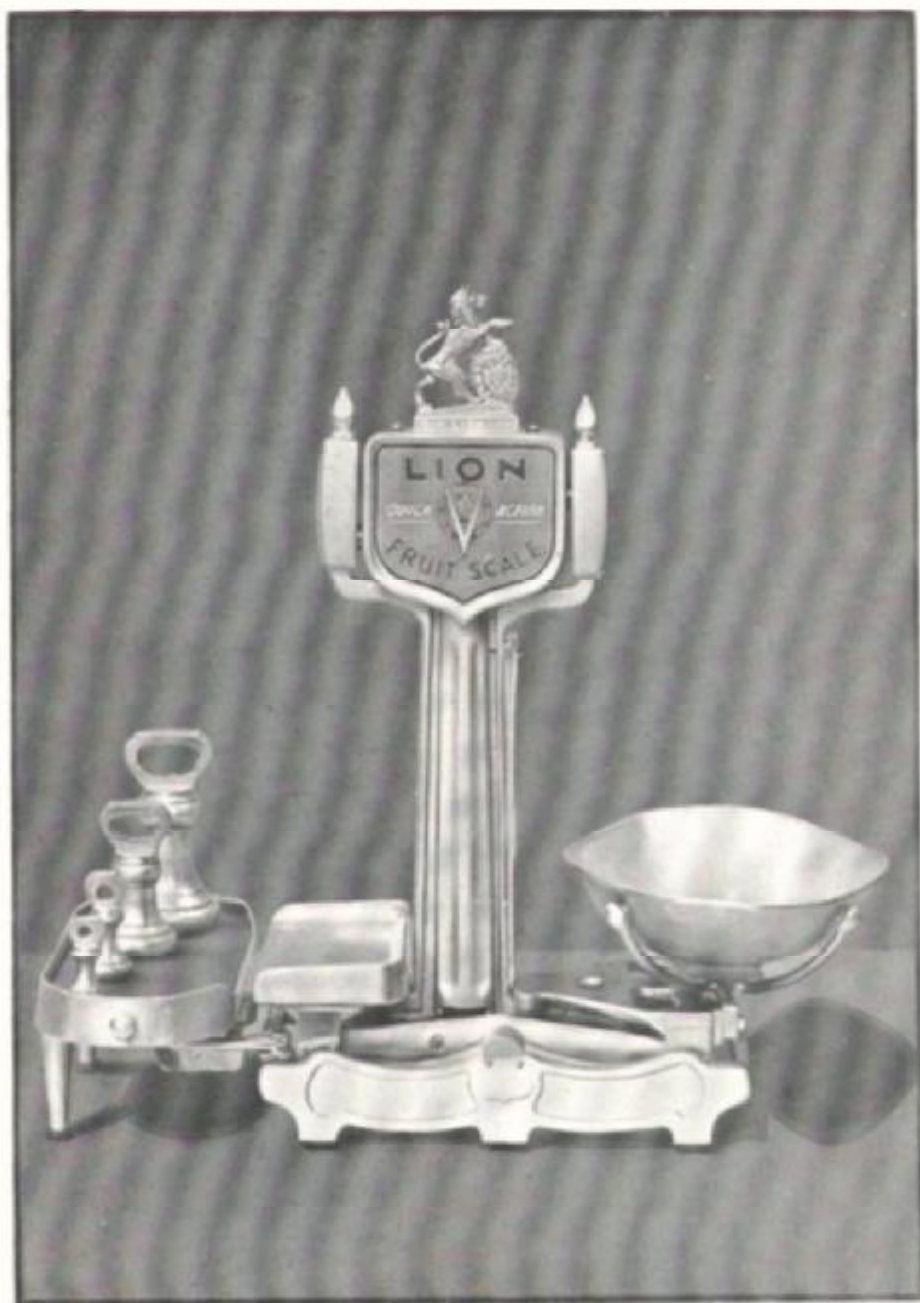


This chart shows Points of Sensitiveness and Merit of a 20 lb. capacity "LION" Quick Action Scale.

Note that a "LION" is sensitive to 20 grains whereas counter or automatic scales require 93 grains to turn them. "LION" Scales are more accurate than fine Tea and Tobacco Scales. "Jeweller's" Scale sensitiveness with Weighbridge strength.



# LION Quick Action SCALE



The "LION" Quick Action Fruit Scale is the most highly developed weighing instrument made for the fruiterer. Compact in design, and finished in Gold Bronze it is the most handsome, sensitive and accurate scale made. It is built to stand up to constant hard wear, is fitted with patent shock-absorbing buffer stops and will retain its high degree of accuracy for many years.

HERBERT & SONS, LTD. 6 & 7, WEST SMITHFIELD, LONDON, E.C.1

# BUILDS GOODWILL



YOUR CUSTOMER LIKES TO SEE THE PLATE GO DOWN.  
This costs nothing on a "LION."

"LION" Quick Action Scales build Goodwill ! That intangible something which means either success or failure.

The modern woman has not lost any of her native mistrust of things mechanical. She does not like charts or dials because she cannot understand them. The "LION" Quick Action Scale shows OBVIOUS weight, inspires confidence and creates satisfaction.

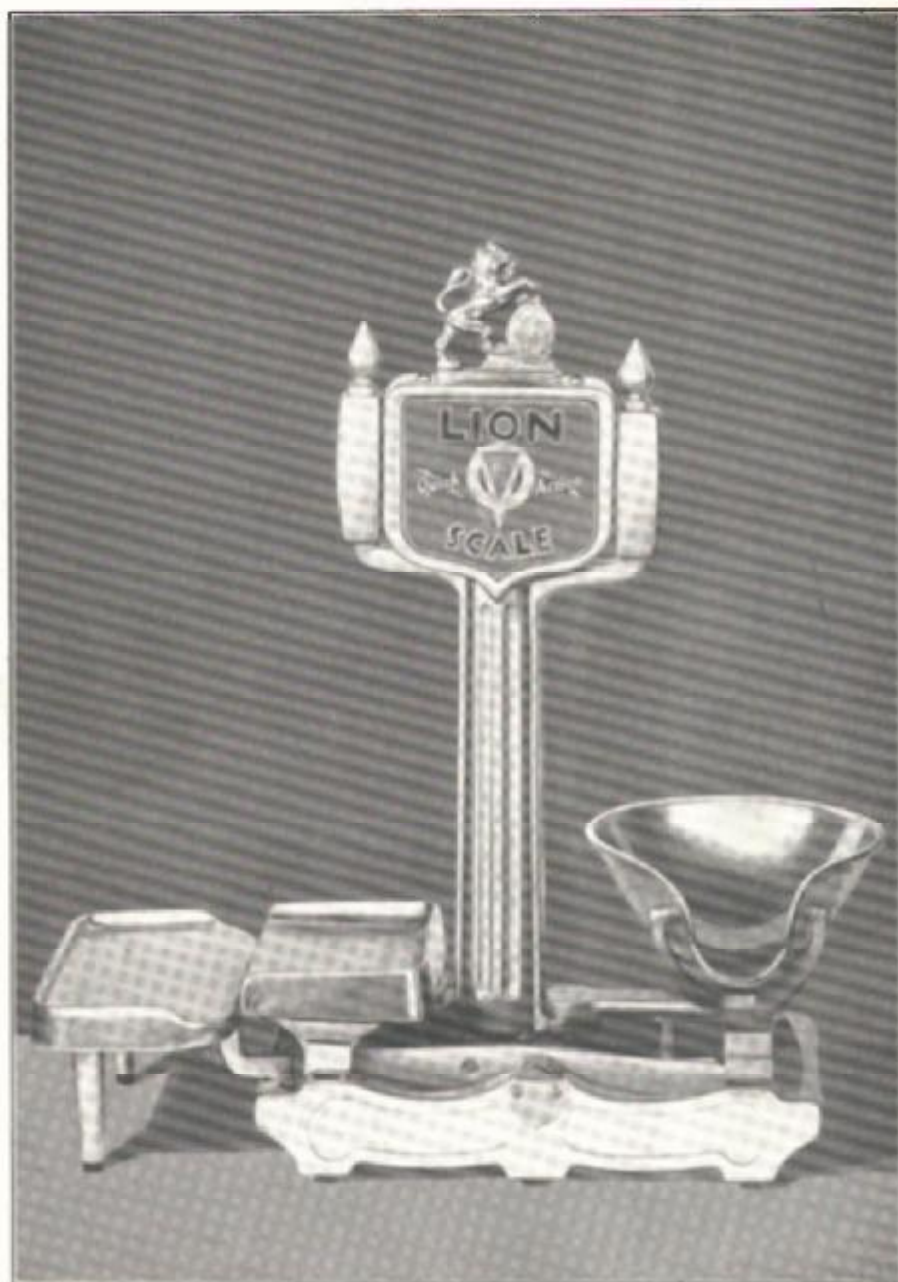
"LION" Quick Action Scales turn at weight - not overweight, thus ensuring satisfied customers at no cost to yourself.

WHAT IS IT WORTH TO YOU TO HAVE THE COMPLETE CONFIDENCE OF YOUR CUSTOMERS ?

HERBERT & SONS. LTD. 6 & 7, WEST SMITHFIELD, LONDON, E.C.1



# LION *Quick Action* SCALE



The "LION" Quick Action Chocolate Scale, 4 lb. capacity, is Fast, highly sensitive, accurate and handsome. It is fitted with shock-absorbing buffer stops, and will save that extra sweet or chocolate. Finished in high grade Gold Bronze with nickel and aluminium goods fittings.

YOUR CUSTOMERS LIKE "LION" QUICK ACTION SCALES.

HERBERT & SONS, LTD. 6 & 7, WEST SMITHFIELD, LONDON.E.C.1

# QUICK ACTION



"LION" Scales are FAST. The patent shock-absorbing Buffer Stops give it a "liveliness" previously unknown in Scales. You can weigh faster on a "LION" Quick Action Scale than upon any other weighing machine.

Although the "LION" Quick Action Scale is highly sensitive, and precisely accurate, it is sturdily built, and there is no delicate mechanism to get out of order. As sensitive as a Jeweller's Balance, and as vigorous and robust as a Weighbridge the "LION" Quick Action Scale is especially made for shops where gentle treatment is not its lot. The Patent Shock-absorbing Buffer Stops, which are fitted to all "LION" Scales, absorb all shock and entirely relieve the knife edges from jar and strain.

"SPEEDY" SERVICE BREEDS SATISFACTION.

SERVE YOUR CUSTOMERS MORE QUICKLY ON A  
"LION" QUICK ACTION SCALE !

HERBERT & SONS, LTD. 6 & 7, WEST SMITHFIELD, LONDON.E.C.1



# LION Quick Action SCALE



The Scale for the modern Tobacconist, this machine has replaced the now obsolete beam scale which is slow and requires much cleaning. The "LION" Quick Action Tobacco Scale is highly accurate, fast and requires no cleaning to keep a worthy place on your counter.

A MODERN SCALE FOR THE MODERN TRADER !

HERBERT & SONS, LTD. 6 & 7, WEST SMITHFIELD, LONDON, E.C.1

# RELIABLE



"LION" Quick Action Scales are reliable because they are scientifically constructed.

No "LION" Scale has ever been rejected or condemned by any Inspector of Weights and Measures for inaccurate adjustment. Reliability supreme. You can be SURE that your weighings are correct with a "LION" Scale.

HERBERT & SONS, LTD. 6 & 7, WEST SMITHFIELD, LONDON, E.C.1



# LION Quick Action SCALE



This "LION" Scale is especially made for the Fish trade, and is the only scale that will satisfactorily perform the service required at a Fishmonger's shop. Finished in the finest quality White Porcelain Enamel with metal parts Chromium Plated, it is easily kept clean by simply wiping with a damp rag. The "LION" Quick Action Scale is the most sensitive scale made, as well as perfectly hygienic and sanitary, having no enclosed underworks to collect dirt and moisture. The capacities recommended for the Fish trade are :—7 lb., 10 lb., 20 lb. and 30 lb.

HERBERT & SONS, LTD. 6 & 7, WEST SMITHFIELD, LONDON, E.C.1

# HYGIENIC



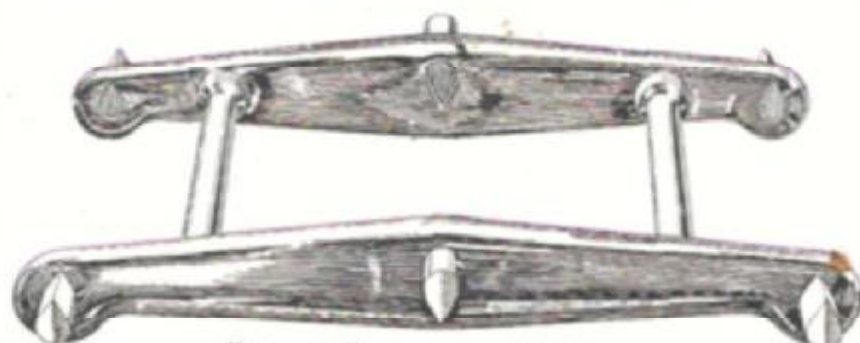
Finished in Gleaming White Porcelain Enamel of the highest grade with exposed metal parts heavily Chromium Plated, the "LION" Quick Action Scale can be kept clean by simply wiping with a damp rag. It will retain its imposing appearance and snow-white cleanliness practically for ever. It needs but little attention to keep it as handsome as it is when it reaches you.

The finish is the most hygienic, as well as the most beautiful and durable yet devised for weighing machines.

A clean scale enhances the value of the goods you sell over it. Your customers like to see their food handled hygienically. Goodwill and increased trade result.



# STURDY



"Lionite" steel double beam.



Buffer stop outer cover.



"Lionite" steel knife edge.



"Lionite" steel bearing.



Complete buffer stop.



Buffer stop inner case with core.



Buffer stop inner case.



Rubber core.



Centre cap.



Friction stud.



Centre cap with friction stud in position.



Top hook.

# CONSTRUCTION

**Double Beam.** The design and construction of the Patent Double Beam is one of the secrets of "LION" sensitiveness. This beam which is made to a degree of accuracy never previously attained in Scale manufacture, is made of Steel, tested to 40 tons tensile strength per square inch. It represents a perfect parallelogram to a .250 of a thousandth of an inch. The Knife Edges are pressed into a broached hole in the beam and are not fixed with nuts as in ordinary scale practice, thus assuring perfect rigidity and everlasting service.

**Knife Edges.** The Knife Edges are made of "LIONITE" Steel which is the hardest Steel known to metallurgical science. They are made in a shape peculiar to "LION" Quick Action Scales, which ensure lasting sharpness to the edges as well as rigidity when mounted in the patent "LION" double Beam.

**Bearings.** The Bearings which are made of the finest "LIONITE" Steel, are the result of exhaustive tests made to determine which shape results in the most satisfactory service, and longest wear.

**Buffer Stops.** The Patent Buffer Stops absorb all shock and stress upon their rubber cores. As soon as the Beam strikes this Buffer the knife edges are lifted off the bearings which are thus relieved of all strain. These Buffer Stops give the "LION" Scale not only a length of life but a liveliness and quick action hitherto unknown.

**The Side Caps** are of special design, and are an example of the precision engineering work embodied in the "LION" Scale to its very smallest details. These Caps are fitted with hardened steel friction studs which prevent all side play.

**The Top Hooks** are made of "LIONITE" Steel backed with best quality mild steel and are accurate to a .250 of a thousandth of an inch.



# LION Quick Action SCALE

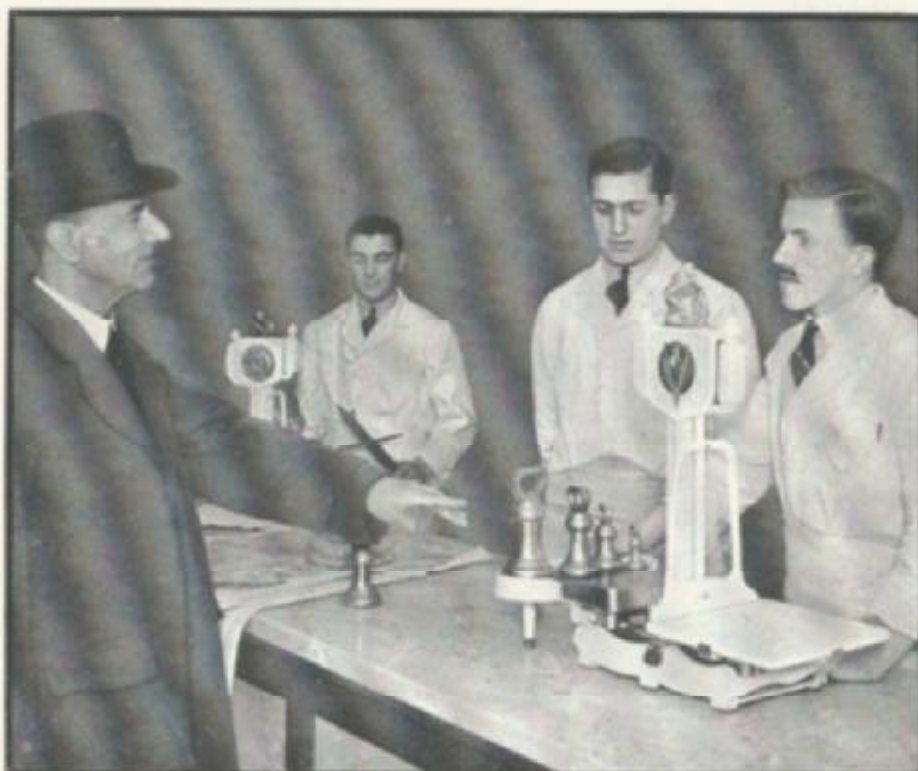


20 lb. capacity POTATO Scale. Made to stand the hard Wear to which this type of scale is usually subjected. It is Strong, Sturdy and Accurate, and is fitted with Patent Shock-absorbing Buffer Stops.

Thoroughly reliable, of imposing appearance it is fitted with Brass Scoop made to hold 14-lb. of Potatoes. Specially designed and built for the Potato trade.

HERBERT & SONS, LTD. 6 & 7, WEST SMITHFIELD, LONDON.E.C.1

# INSPECTORS LIKE



INSPECTORS LIKE "LION" QUICK ACTION SCALES  
because they never give trouble.

We are proud to say that no "LION" Quick Action Scale  
has ever been rejected or condemned by any Inspector of  
Weights and Measures for inaccurate adjustment.

Inspectors know that "LION" Quick Action Scales are 3 times  
more sensitive than is necessitated by the Board of Trade  
Regulations. A "LION" Quick Action Scale after many  
years of hard use is more sensitive than a new counter or  
automatic scale.

If you want accurate and trouble-free weighing you cannot  
do better than use "LION" Quick Action Scales.



# 7 YEARS' GUARANTEE



The  
Gold Bronze  
Model "LION"  
Quick Action  
Scale is  
Fully Guaranteed  
for Seven Years.



This guarantee reads as follows :—

Herbert & Sons, Limited, guarantee for 7 years from the date hereof free of cost to replace any part of the "Lion" Quick Action Scale(s) mentioned below which shall be found to be defective from a cause other than fair wear and tear also to refit any such part to Scales and also when refitted to obtain official re-verification and stamping to conform to the Statutory Regulations provided that notice in writing is given, and that the Scales shall not have been destroyed or damaged by fire or carelessly or improperly used or tampered with or wilfully destroyed or damaged or dealt with or repaired by workmen other than those employed by the guarantors.

"LION" SCALES CARRY THE LONGEST GUARANTEES.

HERBERT & SONS, LTD. 6 & 7, WEST SMITHFIELD, LONDON, E.C.1

# 10 YEARS' GUARANTEE

**The  
White Porcelain  
and  
Chromium-Plated  
Model "LION"  
Quick Action  
Scale is  
Fully Guaranteed  
for Ten Years.**



This guarantee reads as follows :—

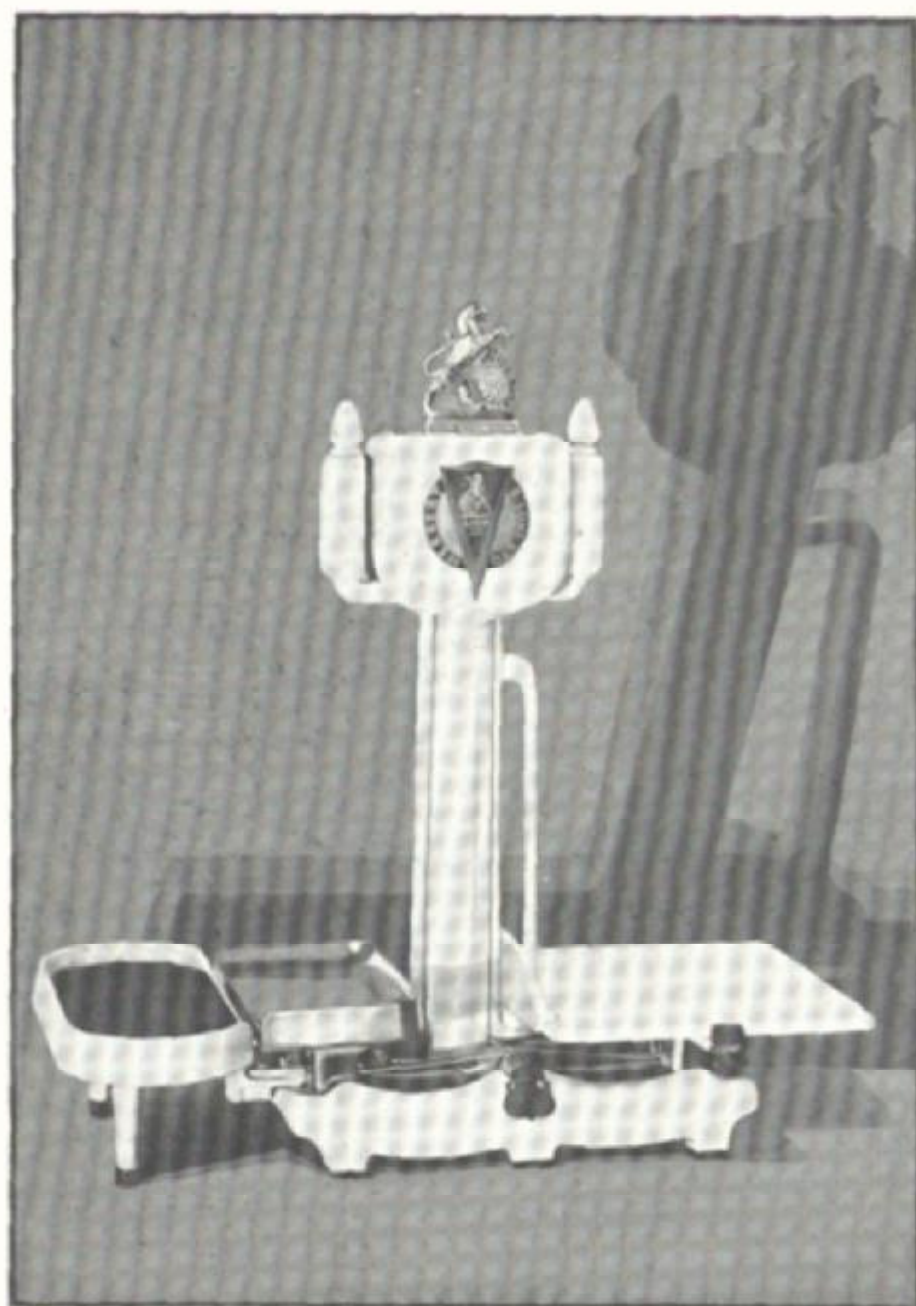
"Herbert & Sons, Limited, guarantee for 10 years from the date hereof to replace free of cost any part of the "LION" Quick Action Scale(s) mentioned below which shall be found to be defective from a cause other than fair wear and tear also to refit any such part to scales and also when refitted to obtain official re-verification and stamping to conform to the Statutory Regulations provided that notice in writing is given, and that the Scales shall not have been destroyed by fire or carelessly or improperly used or tampered with or wilfully destroyed or damaged or dealt with or repaired by workmen other than those employed by the guarantors."



"LION" SCALES CARRY THE LONGEST GUARANTEES.



# LION Quick Action SCALE



The "LION" White Porcelain Quick Action Scale adheres to MODERN tendencies in design. Clean in outline, sturdy and compact in construction, with its gleaming white hygienic porcelain coat, it represents the apex of perfection in modern weighing instruments. The "LION" White Porcelain Quick Action Scale is a thoroughbred, clean-limbed and capable of adding grace to any counter in the Kingdom.

HERBERT & SONS, LTD. 687, WEST, SMITHFIELD, LONDON.E.C.1

# ATTRACTIVE

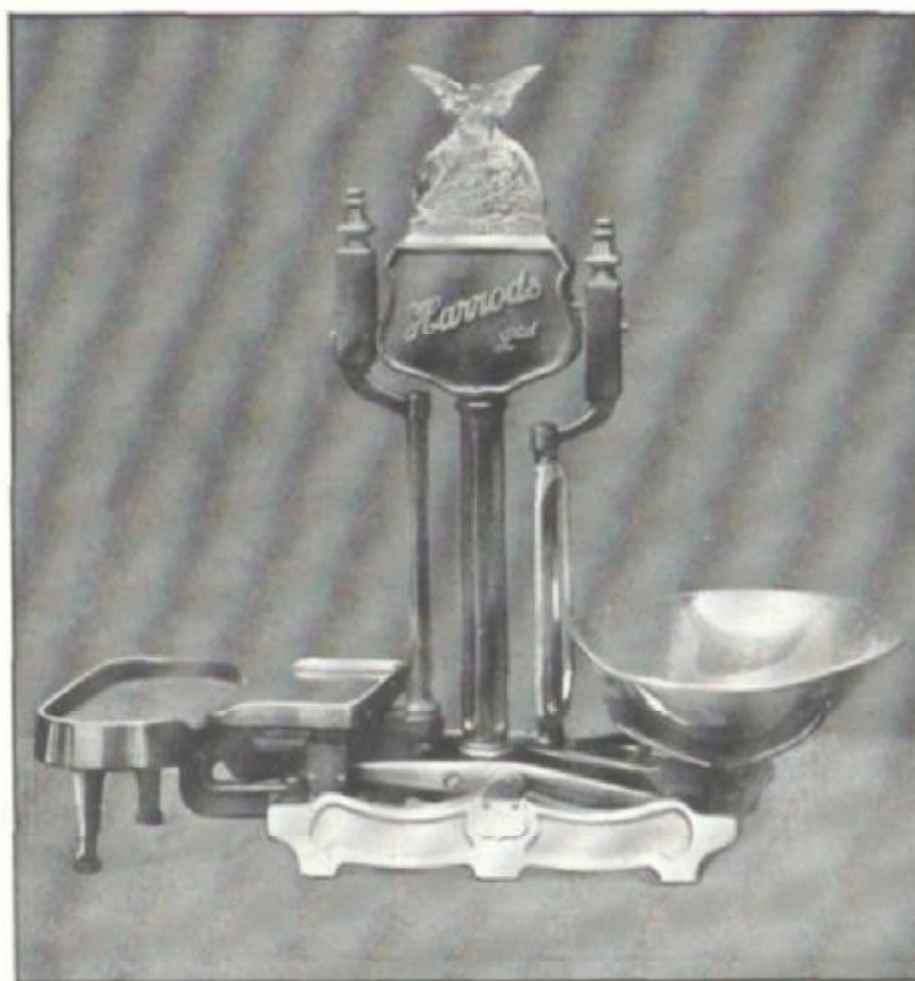


The "LION" Quick Action Gold Bronze Scale fitted with china plate and wood weight-board is both attractive in appearance and workmanlike in construction. Its untarnishable Gold Bronze coating with its beautiful finish, reveals a charm displayed by no other weighing instrument, and its warm, comfortable sparkle attracts the attention of customers and lends an air of distinction to the counter.

HERBERT & SONS, LTD. 687, WEST SMITHFIELD, LONDON.E.C.1



# LION Quick Action SCALE



"LION" Quick Action Scales as supplied to all departments of Messrs. Harrods' Stores, Ltd.

## "LION" USERS

MESSRS. ARTHURS (Westbourne Grove) LTD.	.....
" JOHN BARKER & Co., LTD.	.....
" JOHN BEST LTD.	.....
" J. CRIDLAN & SON, LTD.	.....
" J. H. DEWHURST, LTD.	.....
" EASTMAN'S LTD.	.....
" S. FROST & Co., LTD.	.....
" HARRODS, LTD.	.....
" J. HEARN & SONS, LTD.	.....
" IMPERIAL CASH STORES	.....
" JONES BROS. (Holloway) LTD.	.....
" JOHN QUALITY, LTD.	.....
" LONDON CENTRAL MEAT CO., LTD.	.....
" RAYNERS, LTD.	.....

HERBERT & SONS, LTD. 6 & 7, WEST SMITHFIELD, LONDON.E.C.1

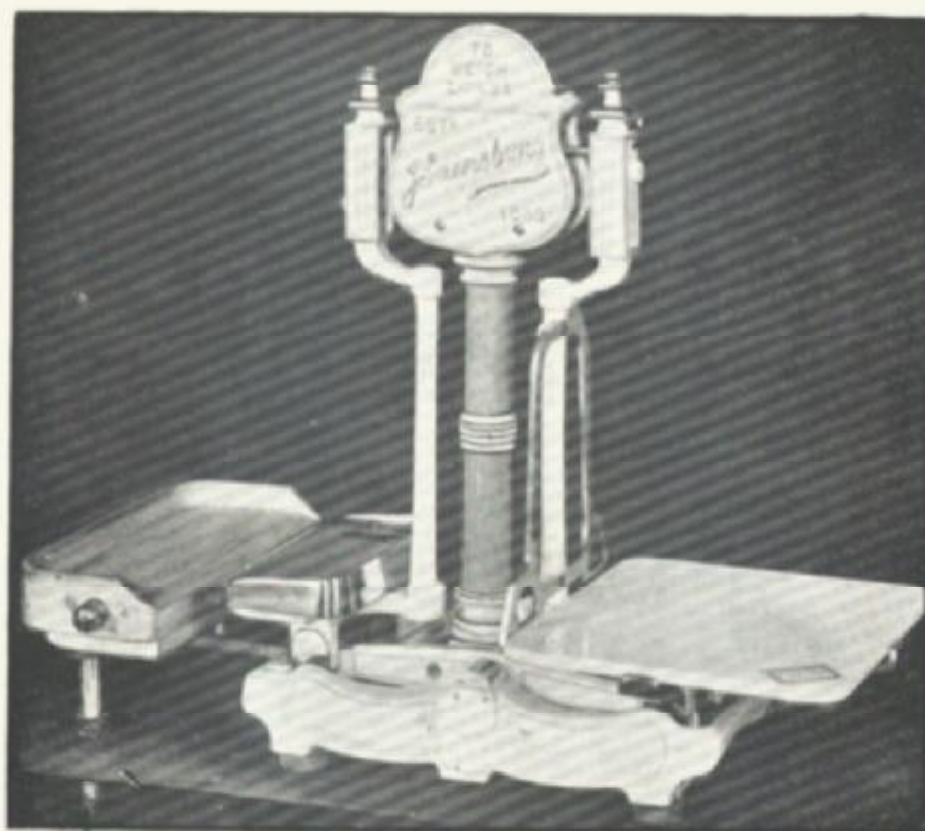
# USERS

## "LION" USERS

MESSRS. J. SAINSBURY .....	
.. SELFRIDGE, LTD. ....	
.. UNITED KINGDOM TEA CO., LTD. ....	
.. WM. WHITELY, LTD., ETC. ....	
.. SLATERS & BODEGA, LTD. ....	
.. W. H. CULLEN, Finsbury and Branches .....	Grocers
.. AXON & SONS, Brentford and Romford .....	Butchers
.. AYLETT BROS., Market Place, Romford .....	Butchers
.. BAILEY, High Street, Wealdstone .....	Fishmonger
.. BECKLEY & SONS, 167, Montreal Road, Tilbury .....	Grocers
.. JOHN BARNES, LTD., Finchley Road .....	Grocers
.. BOSWELL & SONS, Burdett Road, Bow .....	Tripe Dressers
.. CLEMENTS DAIRIES, Canvey Island .....	Dairy
.. CLAPTON FRUIT STORES, Stamford Hill .....	Fruiterers
MR. DIMONDS, Finchley Road and Branches .....	Provisions
MESSRS. DEACOCK & SONS, Holloway Road and Branches .....	Provisions
.. DUNCAN'S FRUIT STORES, High Road, Wembley .....	Fruiterers
.. EDWARDS & SONS, Forest Row, Walthamstow .....	Butchers
.. FOX & SONS, Queens Road, Walthamstow .....	Fishmongers
MR. FREEMAN, 176, High Street, Kilburn .....	Butcher
.. GOODCHILD, 102, Lincoln Road, Enfield .....	Butcher
MESSRS. GIBSON & SON, High Street, Watford .....	Butchers
MR. HELLIER, Holloway Road, Islington .....	Butcher
MESSRS. HART & SONS, Tilbury and Branches .....	Butchers
MR. HACKSHALL, 23, Barking Road, East Ham .....	Fishmonger
MESSRS. HARRIS & SONS, High Street, Stoke Newington .....	Butchers
.. HORTON & SONS, 115, St. Albans Road, Watford .....	Butchers
MR. JONES, Upper Clapton Road, Clapton .....	Fishmonger
MESSRS. JOHNSON & SONS, 313, Kentish Town Road .....	Provisions
.. JOLLYS, LTD., Hammersmith and Branches .....	Ham & Beef
.. KING & SONS, Pitsea .....	Butchers
.. LAWS & CO., Minorities and Branches .....	Provisions
.. LEE & SONS, Chingford and Ponders End .....	Fruiterers
MR. LEWERS, Old Street, E.C.1 .....	Confectioner
MESSRS. LIDSTONE LTD., Park Street, Camden Town .....	Butchers
.. LUCKIN SMITH, Chelmsford and Branches .....	Grocers, etc.
.. LEWIS'S FRUIT STORES, 618, Holloway Road .....	Fruiterers
.. MOORE & SONS, Grandy Street, Poplar .....	Fishmongers
MR. MORRIS, Romford Road, Canning Town .....	Kosher Butcher
MESSRS. MARTIN & SON, 331, Lea Bridge Road, Leyton .....	Fishmongers
.. MASH & AUSTIN, Covent Garden .....	Fruiterers
.. MEDCALF & SONS, Tilbury and Branches .....	Grocers, etc.
.. MABROTS' STORES, Edmonton and Branches .....	Grocers, etc.
.. PARAMOUNT FRUIT STORES, Kenton .....	Fruiterers
.. PHILLIPS & SONS, St. John's Wood and Branches .....	Grocers, etc.
.. PALMER & SONS, Stainsby Street, Poplar .....	Grocers, etc.
.. PENN STORES, Barking Road, Upton Park .....	Grocers, etc.
.. RAYNER'S STORES, LTD., Hampstead Rd. & Branches .....	Grocers, etc.
.. RUMSEY & SONS, High St., Upminster, Essex .....	Fishmongers
.. STAVELEY'S STORES, Edmonton and Branches .....	Grocers, etc.
.. SMITH & CO., High Street, Grays, Essex .....	Butchers
.. SMEETON'S STORES, Manor Road, West Ham .....	Provisions
.. SEWARD & SONS, 3, West Hill, Highgate .....	Fruiterers
MR. STOFFER, Hoe Street, Walthamstow .....	Fishmonger
MESSRS. TAYLOR & SONS, Victoria Road, Romford .....	Butchers
MR. WOODWARD, Palmers Green .....	Fruiterers
MESSRS. WARD & SONS, James Street, Walthamstow .....	Butchers



# LION Quick Action SCALE



"LION" Quick Action Scales as supplied to Messrs. J. Sainsbury of Blackfriars, S.E., and Branches.



A batch of Scales ready for delivery to Messrs. J. Sainsbury.

HERBERT & SONS, LTD. 6 & 7, WEST SMITHFIELD, LONDON, E.C.1

# USERS



Mr. A. Masters, 142, High Street, Clapham, London, S.W.4.

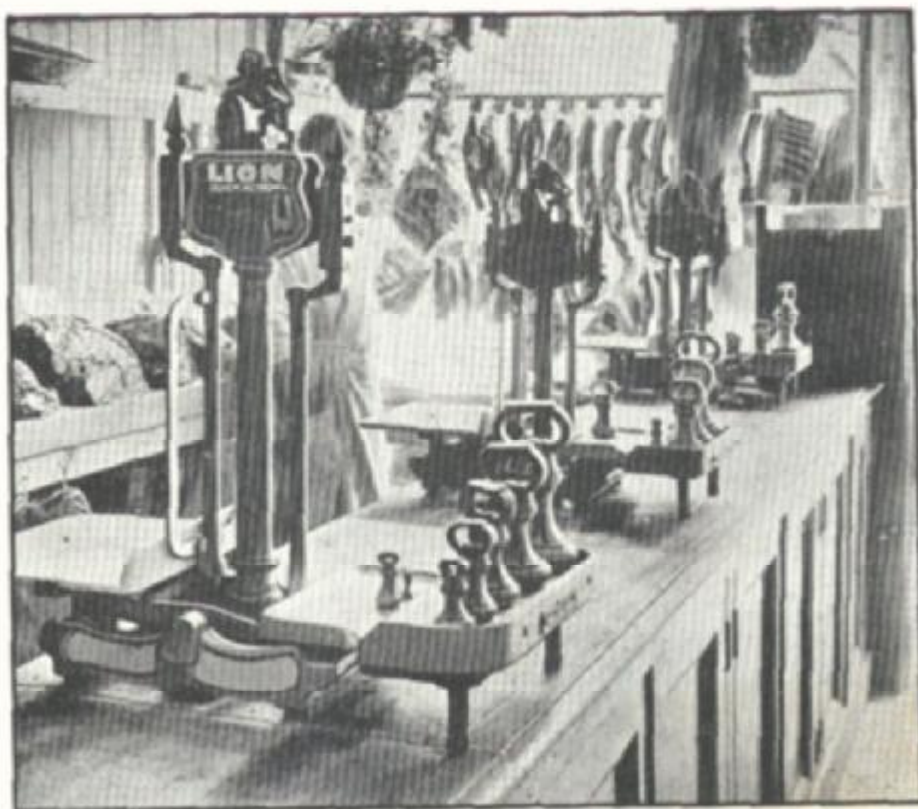


Messrs. Parlons & Co., 283, Whitechapel Road, London, E.

HERBERT & SONS, LTD. 687, WEST SMITHFIELD, LONDON, E.C.1



# LION *Quick Action* SCALE



Messrs. Atkinhead & Co., Glasgow.



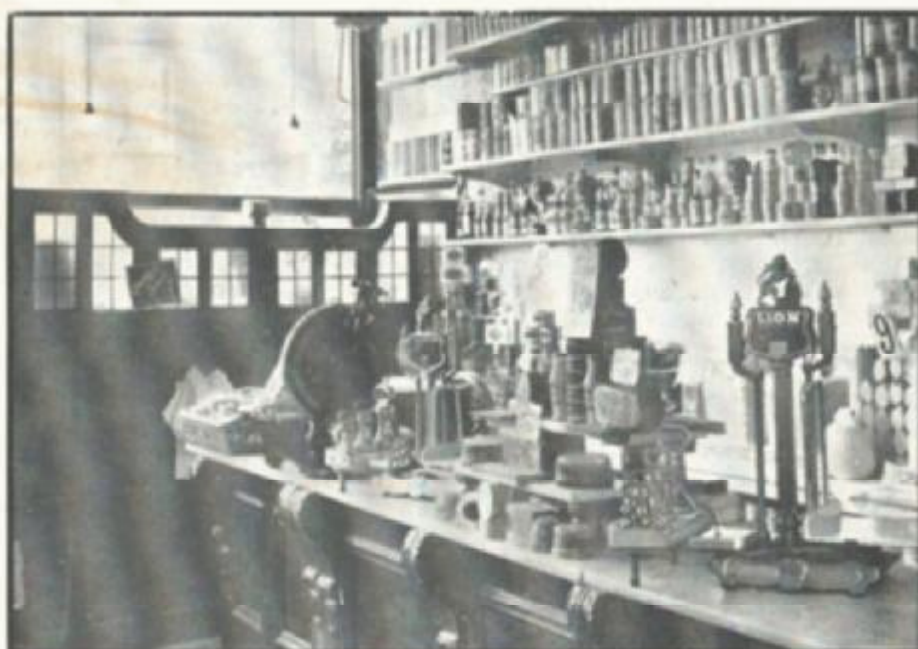
"LION" Scales are used in the many branches of Messrs. Hearn & Sons, Ltd., 19, Chestnut Grove, London, S.W.12.

HERBERT & SONS, LTD. 6 & 7, WEST SMITHFIELD, LONDON, E.C.1

# USERS



Messrs. Ellis & Co., Tobacconists, 322, Caledonian Road, N.



Messrs. Reeves Bros., 49/51, Bellevue Road, Southampton.



# LION *Quick Action* SCALE



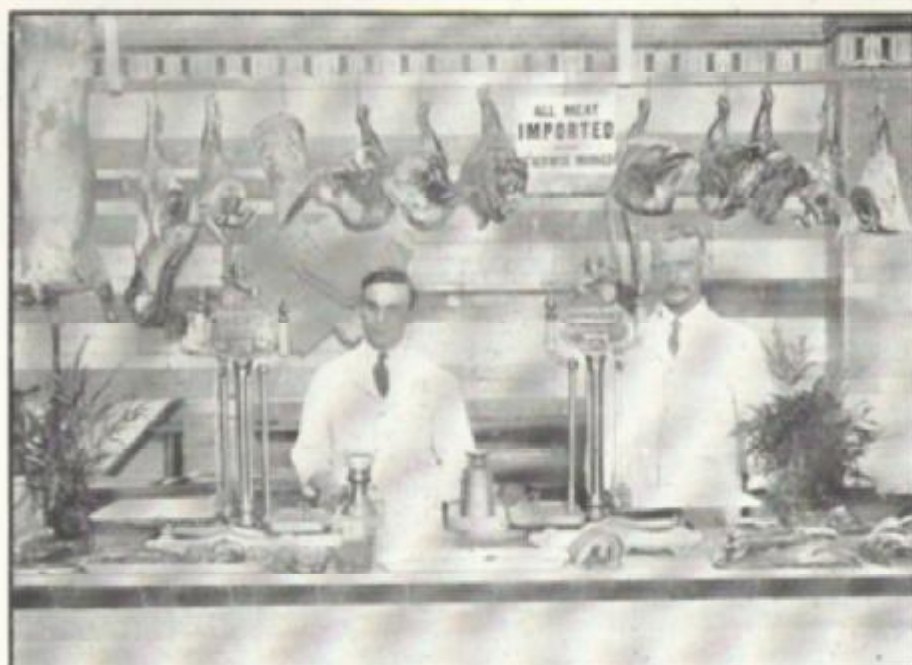
Mr. Morgan, The Station Approach, Oxted, Surrey.

## "LION" USERS

MESSRS. WOODBOYS, Pinner and Branches.....	Butchers
MR. WOODS, High Street, Aldgate.....	Cooked Meats
" WIDDEN, High Street, Highgate.....	Butcher
MESSRS. WILLIAMS DIRECT SUPPLY STORES, Holloway Rd....	Grocers, etc.
" WASSAM & SONS, 32, Chapel Street and Branches.....	Bakers
MR. A. ACOCK, 283, Kingston Road, Merton Park.....	Greengrocer
" T. ALDRIDGE, 34/6, Albion Street, Rotherhithe.....	Grocer, etc.
MESSRS. J. BOLTON LTD., 98c. High Street, Eltham .....	Butchers
MR. S. F. BELL, 118, Trafalgar Street, Greenwich.....	Grocer
MESSRS. BRIGDEN & Co., 282, Sangley Road, Catford .....	Grocers, etc.
MR. S. J. BEADLE, 88, Elm Road, New Malden.....	Grocer
MESSRS. CHALK & COX, Forest Hill and Branches .....	Butchers
MR. V. CLARKE, 123, Stephendale Road, Fulham.....	Grocer
MESSRS. DURBIN'S PROV. STORES, East Sheen.....	Grocers
MR. A. J. DOWNS, 191, Rye Lane, Peckham.....	Grocer
" G. DODD, 51, Brunel Road, Rotherhithe.....	Grocer
" R. J. DAVIES, 115, Trundleys Road, Deptford.....	Provisions
MESSRS. DOWLING & NEWCOMBE, Camberwell Rd. & Branches ....	Oil
MR. H. ELLIOTT, 25, High Street, Tooting.....	Butcher
" A. R. GREENGO, 7, Hawley Road, Dartford.....	Provisions
MESSRS. GRANT, 149, Masons Hill, Bromley .....	Fruiters
" H. HOLDRONS LTD., Rye Lane, Peckham ....	Confectionery Dept.
" G. HAWES & SONS, LTD. Stockwell & Branches.....	Butchers
MR. A. T. HART, 2 London Rd., Kingston and Branches.....	Butcher
" H. HARTWELL, Thornton Heath and Branches.....	Butcher
" A. F. HOOKHAM, 25, Hartfield Road, Wimbledon.....	Grocers
" D. GORSTON, 6, Deptford Market, S.E.....	Butcher
" S. HARVEY, 14, Tulse Hill, S.W.....	Provisions
" H. J. JACKMAN, 317, Lower Addiscombe Rd. Croydon ....	Butcher
MESSRS. JOYCE & MATTHEWS, Brompton Rd., & Branches....	Butchers

HERBERT & SONS, LTD. 6 & 7, WEST SMITHFIELD, LONDON.E.C.1

# USERS



Messrs. Jones Bros. (Holloway) Ltd. Meat Department.

## "LION" USERS.

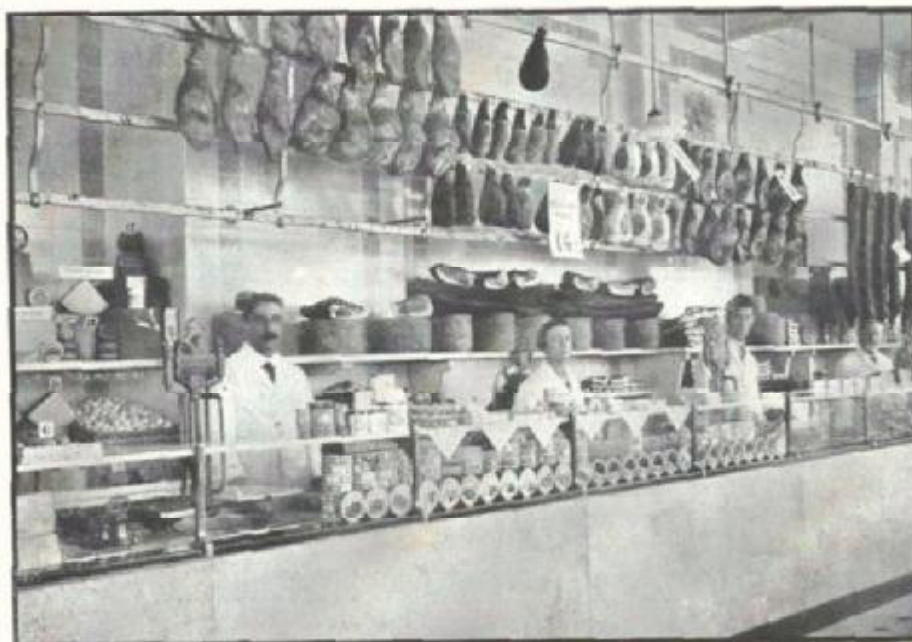
MR. A. KINGSTON, Streatham and Branches.....	Butcher
" W. E. MEARS, 20, Cale Street, Chelsea.....	Grocer
MESSRS. MARTIN & Co., Loughboro' Junction.....	Provisions
MR. B. H. MITCHELL, 527, Croydon Road, Beckenham.....	Fishmonger
MESSRS. B. W. PARSONS LTD., Sutton and Branches.....	Butchers
MR. E. PHILLIPS, 64, East Street, Walworth.....	Grocer
" J. ROBBINS, 321, Brockley Road, S.E.....	Fishmonger
" T. A. STREET, 113, Manor Road, Wallington.....	Greengrocer
" A. STEVENSON, 178, Lower Richmond Rd., Putney.....	Confectioner
MESSRS. SCOTTON BROS., 63a, Hall Road, Peckham.....	Greengrocers
MR. F. A. SNAITH, 40, Well Hall Road, Eltham.....	Confectioner
" SANDIFORD, 103, Railton Road, Brixton.....	Provisions
" TARR, 145/151, Meeting House Lane, Peckham.....	Butcher
MESSRS. E. TUCKER, Brockley Park, Forest Hill & Branches.....	Butcher
" VAUGHAN, 105, High Street, Putney and Branches.....	Butcher
MR. H. ANDREWS, Hagbourne Road, Didcot.....	Butcher
" F. ATKINS, Dorchester.....	Butcher
" V. BLAKER, Wokingham Road, Reading.....	Provisions
" G. BRAZIL, High Street, Hamersham.....	Butcher
" BAILEY, Commercial Road, Swindon.....	Butcher
MESSRS. BUTTERFIELD & SON, New Road, Oxford.....	Butchers
MR. C. J. BLOOMFIELD, West Street, Great Marlow.....	Butcher
" G. BARTRUM, High Street, Gt. Marlow.....	Fishmonger
" F. J. BOSWELL, School Road, Tilehurst.....	Butcher
" R. BOSELEY, St. Mary's Street, Wallingford.....	Butcher
" A. BLIGH, Akerman Street, Tring.....	Butcher
" W. E. BOWERMAN, Headington Oxon.....	Butcher
" BAILEY, Ash Vale.....	Butcher
MESSRS. BUTLERS STORES, Market Street, Maidenhead.....	Provisions



# LION *Quick Action* SCALE



The Butter and Provision Counter of the Eastern Counties Dairy Farmers Ltd., 13, Broad Street, Dagenham.



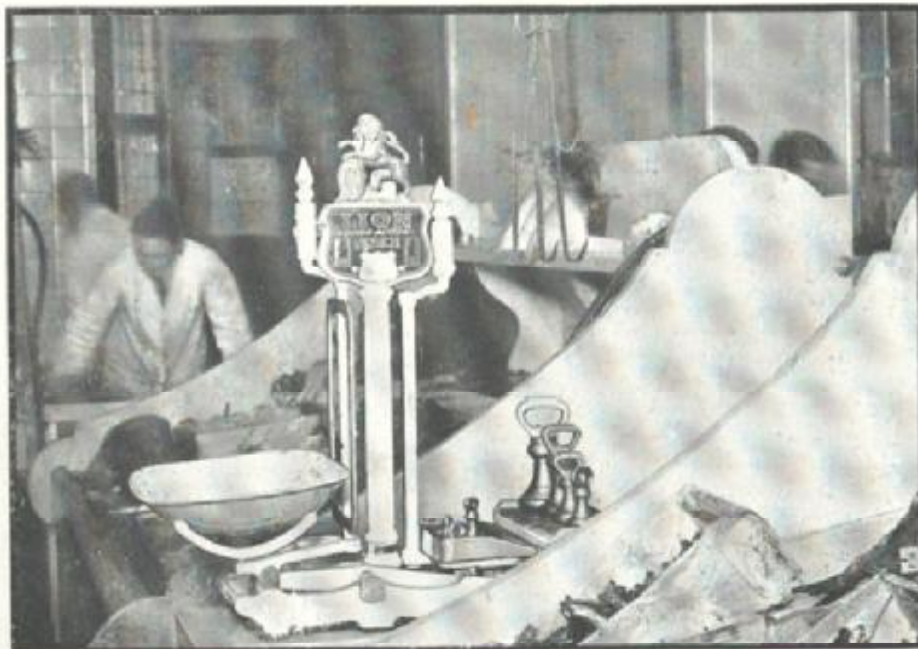
Messrs. William Whiteley Ltd., Queen's Road, London, W.2.  
'LION' Quick Action Scales are used extensively in the largest stores.

HERBERT & SONS, LTD. 6 & 7, WEST SMITHFIELD, LONDON, E.C.1

# USERS



Mr. E. Smith, 317, Walworth Road, London, S.E.  
Equipped with Modern White Porcelain Quick Action Scales.



Fish Dept. of Messrs. William Whiteley's Ltd., Queen's Road,  
Bayswater, W.



# LION Quick Action SCALE



Messrs. Arthurs (Westbourne Grove) Ltd., London, W.1.

## "LION" USERS.

THE BASINGSTOKE CO-OPERATIVE SOCIETY, Basingstoke .....	Butchers
MESSRS. CASEY'S STORES, Guildford .....	Provisions
MR. A. H. CALCUTT, Kidlington.....	Provisions
" W. R. CLARKE, High Street, Gt. Marlow.....	Butcher
" F. H. CLEARE, High Street, Burnham .....	Butcher
" A. DURHAM, St. Mary's Street, Wallingford.....	Fishmonger
" DANIELS, Pirbright, Surrey .....	Butcher
" W. ELPHICK, High Street, Haslemere .....	Butcher
" EDWARDS, Aldershot .....	Butcher
" L. FERGURSON, West Street, Farnham .....	Butcher
MESSRS. FRANCIS BROS., Watlington Street, Reading.....	Butchers
" FOY'S STORES, Market Place, Wokingham .....	Provisions
" FLEET & PAINTER, West Street, Gt. Marlow .....	Butchers
MR. H. FOWLIE, Queen's Street, Maidenhead.....	Butcher
MESSRS. GRIMBLY HUGHES & Co., LTD., H.O. Oxford.....	Grocers
" GREEN'S STORES, Broadway, Ruislip .....	Grocers
MR. J. GILLET, Datchet, Nr. Windsor .....	Butcher
" J. GODDARD, Castle Street, Reading .....	Butcher
" A. E. GLEINSTER, Oxford Road, Reading.....	Butcher
" J. GURNEY, High Street, Amersham.....	Butcher
MESSRS. GREENS STORES, Sycamore Road, Amersham .....	Provisions
MR. S. GOODRED, White Lion Road .....	Butcher
" T. GURNHAM, Highfield Road, Shepperton.....	Fishmonger
" W. GOMM, 6, Market Square, Chesham.....	Butcher
" J. HAT, JNR., Cowley Road, Oxford.....	Butcher
" E. O. HOGG, 4, West Street, Gt. Marlow.....	Butcher
" J. R. HAWKER, Hart Street, Henley.....	Confectioner
" J. HALL, 16, Mill Street, Wantage.....	Butcher
" HARPER & SON, Oxford.....	Butcher
" HILL, Goring .....	Fruiterer

HERBERT & SONS, LTD. 6 & 7, WEST SMITHFIELD, LONDON.E.C.1

# USERS



Williams Bros., Direct Supply Stores, Ltd., (Watford Branch).

## "LION" USERS.

MR. HODGES, Addleston .....	Butcher
.. HERRINGTON, Frimly Green .....	Butcher
.. JOHNS, High Street, Haslemere .....	Butcher
.. K. KNIGHT, Oxford .....	Fruiterer
.. H. KIMBER, Merrow .....	Provisions
.. W. J. LONG, Crondall, Hants .....	Butcher
MESSRS. LONGHURST & SONS, Monks, Risborough, Bucks .....	Butchers
MR. A. LANSLEY, Winchester Street, Basingstoke .....	Butcher
.. J. E. LEEDS, Thames Street, Staines .....	Butcher
.. C. LESTER, St. Peters Street, Wallingford .....	Butcher
.. E. LINEY, Reading .....	Butcher
.. E. MERRETT, East Street, Farnham .....	Fishmonger
.. E. MOLE, High Street, Weybridge .....	Butcher
.. E. G. MOORE, Church Street, Cintbury .....	Butcher
.. C. MEEKS, Kings Street, Maidenhead .....	Butcher
.. J. MILLS, Thottermiell, Haslemere .....	Butcher
MESSRS. NOYCE & SON, Winchester Street, Andover .....	Butchers
.. PARSONS, LTD., High Street, Odiham, Hants .....	Butchers
MR. G. PENNEY, Wokingham Road, Reading .....	Fruiterer
.. H. J. PAINTER, Denmark Street, Wokingham .....	Butcher
.. E. PRATT, High Street, Hungerford .....	Butcher
.. W. H. PALMER, Market Place, Wantage .....	Butcher
.. JOHN QUALITY, Broad Street, Reading .....	Provisions
MESSRS. RYMAN & Co., Broadway, Didcot .....	Butchers
MR. J. REVELL, Oxford .....	Butcher
THE READING CO-OPERATIVE SOCIETY, Reading .....	Butcher
MR. R. NASH, Benson .....	Butcher
MESSRS. NEVILLE BROS., Slough .....	Butchers
MR. S. SWEATMAN, Oatlands Park, Weybridge .....	Butcher
.. A. R. SHATTOCK, Caversham Road, Reading .....	Butcher



# LION Quick Action SCALE



Fish Department, Messrs. Arthur's (Westbourne Grove) Ltd.  
Equipped throughout with "LION" Quick Action Scales.



A Corner of the Fruit Dept. of  
Messrs. Selfridge & Co. Ltd., Oxford Street, London, W. 1.  
Equipped throughout with "LION" Quick Action Scales.

HERBERT & SONS, LTD. 6 & 7, WEST, SMITHFIELD, LONDON, E.C.1

# USERS



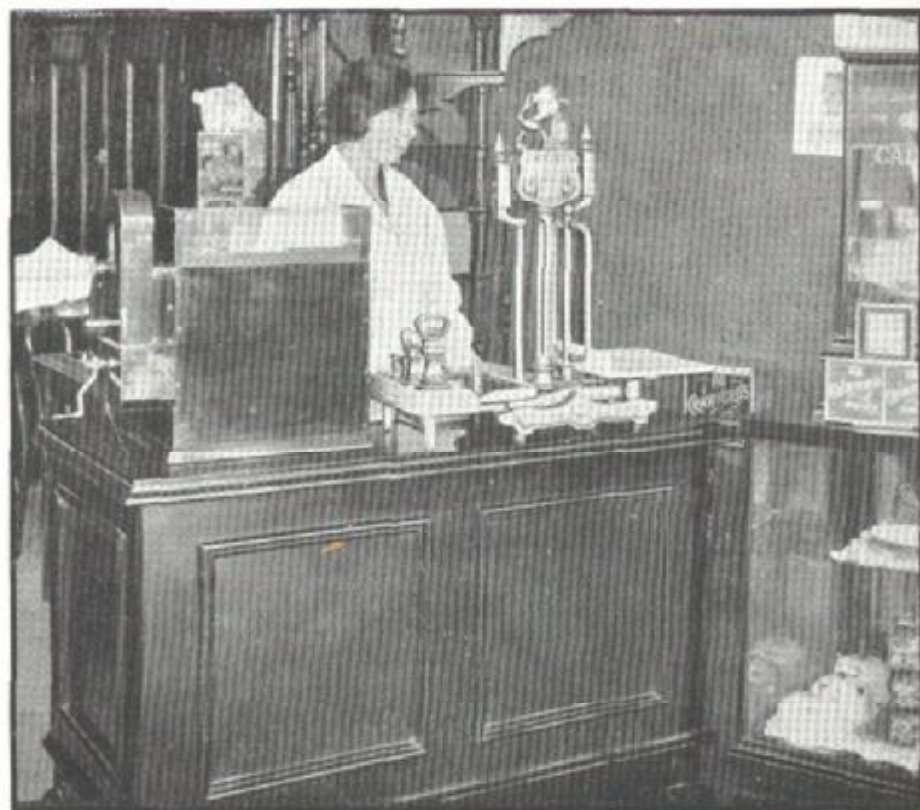
Messrs. William Whiteley Ltd., Queen's Road. London, W.2.  
Up-to-date Lion Scales working alongside Lion Scales 40 years old.



A Corner of Provision Dept. of  
Messrs. John Barnes & Co. Ltd., 191, Finchley Rd., London, N.W.3.  
Equipped throughout with "LION" Quick Action Scales.



# LION *Quick Action* SCALE



Mr. F. Broomfield, Baker, 332, Whitehorse Road, Croydon.

## "LION" USERS.

MR. R. SAVAGE, Hill Avenue, Amersham.....	<i>Fishmonger</i>
MESSRS. E. STONE & SON, Bath Road, Cippenham, Slough....	<i>Butchers</i>
MR. S. SMITH, Broadway, Didcot.....	<i>Butcher</i>
MESSRS. SPOONER & SON, Guildford.....	<i>Fruiters</i>
MR. A. THELENBURG, Market Place, Basingstoke.....	<i>Butcher</i>
„ J. TURNER, Cricklade Road, Swindon.....	<i>Provisions</i>
„ TOWNSEND, High Street, Dorchester, Oxon.....	<i>Butcher</i>
„ TARR, Aldershot .....	<i>Butcher</i>
MESSRS. VICARS & SON, West Street, Reading.....	<i>Butchers</i>
MR. W. E. VIVIAN, Norcot Road, Tilehurst .....	<i>Butcher</i>
„ E. WELSH, Whielden Street, Amersham.....	<i>Butcher</i>
„ C. A. WILLIS, Faringdon Road, Swindon .....	<i>Butcher</i>
MESSRS. WEBB & WILSON, High Street, Andover.....	<i>Butchers</i>
„ R. G. SNOOK & SONS, Wales.....	<i>Grocers</i>
„ ELY, LTD., Wales .....	
„ ANDERSON & SONS, Mart Pitt Hill, Edenbridge.....	<i>Grocers, etc.</i>
MR. A. ATKINS, New Road, Gravesend .....	<i>Fruiterer</i>
„ W. B. ALLEN, Harboro Street, Whitstable.....	<i>Butcher</i>
„ C. H. AUSTIN, Speldhurst.....	<i>Butcher</i>
„ R. ABEL, London Road, Dunton Green .....	<i>Butcher</i>
„ W. BLAKELEY, High Street, Tonbridge.....	<i>Butcher</i>
„ G. E. BUTLER, 161, Napier Road, Gillingham.....	<i>Grocer</i>
„ R. M. BARTLETT, High Street, Sutton Valence.....	<i>Confectioner</i>

HERBERT & SONS, LTD. 6 & 7, WEST SMITHFIELD, LONDON.E.C.1

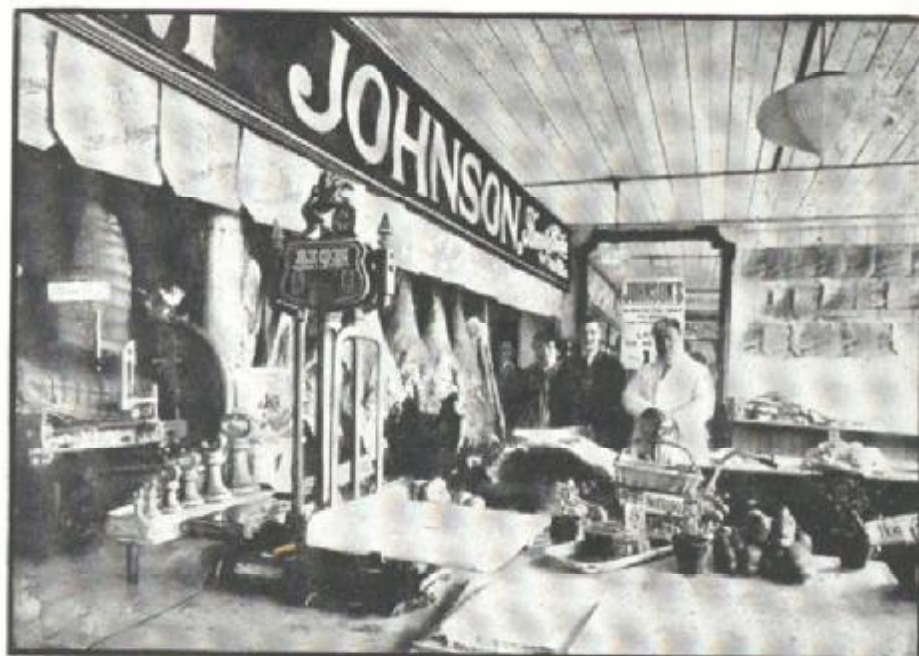
# USERS

## "LION" USERS.

MR. J. H. BURKE, High Street, Snodland .....	Confectioner
" G. BALLARD, West End, Marden .....	Butcher
" BRIDGLAND, Luton Road, Chatham .....	Butcher
" COLLARD, 25, North Street, Strood .....	Grocer
" W. H. CUTBUSH, High Street, Maidstone .....	Butcher
MESSRS. CLAY BROS., London Road, Dunton Green .....	Grocers
MR. C. V. CREED, London Road, Ospringe .....	Butcher
" W. DRAKE, 13, Perry Street, Gravesend .....	Butcher
" J. DAINTY, 108, West Street, Faversham .....	Cooked Meats
" J. A. DADSWELL, Coxheath .....	Grocer
" A. DRURY, 106, Atherstone Road, Faversham .....	Grocer
" H. ELLIS, 19, Dover Street, Maidstone .....	Grocer
THE FOLKESTONE CO-OPERATIVE SOCIETY, High St. Hythe & Cheriton .....	Grocers
MESSRS. FILE & SON, High Street, Boughton .....	Grocers
THE GILLINGHAM CO-OPERATIVE SOCIETY, High Street, Gillingham .....	Grocers
MR. J. GOODWIN, 26/28, Cazeneuve Street, Rochester .....	Grocer
" T. GIPSON, 17, King Street, Rochester .....	Fruiterer
" T. GIPSON, 129, Snargate Street, Dover .....	Fruiterer
" R. H. HOLTON, High Street, Boughton .....	Grocer
" J. L. HARRIS, High Street, Halling .....	Grocer
" H. JACKSON, High Street, Snodland .....	Grocer
" H. E. KERMSLEY, Duncan Road, Gillingham .....	Butcher
" H. A. KNOWLDEN, Luton Road, Chatham .....	Butcher
MESSRS. J. KINGSLAND & SON, Holboro Road, Snodland .....	Butchers
" T. KINGWORTH & SON, Post Office, Langley .....	Grocers
MR. W. LONGLEY, High Street Rochester and Borstal .....	Butcher
MESSRS. H. LUCK & SONS, London Road, Sevenoaks .....	Butchers
MRS. LOWRIE, High Street, Otford .....	Grocer
MR. MAXTED, Church Street, Wye .....	Butcher
" G. O. T. MONCKTON, 195, Upper Fant Road, Maidstone .....	Grocer
" T. J. MORPHEW, 52, Station Road, Herne Bay .....	Confectioner
" H. MASON, The Moore, Hawkhurst .....	Grocer
" E. MORGAN, Upper Stone Street, Maidstone .....	Butcher
" A. OFFEN, High Street, Shoreham .....	Butcher
" H. T. OFFEN, London Road, Dunton Green .....	Butcher
" W. F. ONGLEY, 241, High Street, Chatham .....	Fruiterer
" PHILPOTT, Kennington, Ashford .....	Butcher
" H. C. PALMER, 15, Coopers Street, Gravesend .....	Grocer
" F. W. PETTMAN, Station Road, Birchington .....	Fruiterer
" H. PERRY, 38, High Street, Ashford .....	Fruiterer
" M. PETERS, 225, High Street, Chatham .....	Fishmonger
" G. W. RHODES, 111, Upper Luton Road, Chatham .....	Grocer
" RUCK, College Road, Wye .....	Grocer
MESSRS. RUSSELL & SONS, Queen Street, Gravesend .....	Butcher
MR. R. C. RELF, New Hythe .....	Butcher
MESSRS. SWIFT & AUSTIN, High Street, Dymchurch .....	Butchers
MR. SAWYER, 75, Camden Road, Tunbridge Wells .....	Fruiterer
THE SHEERNESS CO-OPERATIVE SOCIETY, High Street, Sheerness .....	Grocers
MR. A. W. SILVER, Magpie Hall Road, Chatham .....	Butcher
" T. SEARLES, 145, Canterbury Street, Gillingham .....	Fruiterer
" T. WHEBBY, High Street, Wrotham .....	Butcher
" WATSON, 2, Richmond Road, Gillingham .....	Butcher
" G. WARNER, Richmond Road, Gillingham .....	Butcher
" D. E. WHITEHEAD, Leigh, Penshurst .....	Butcher
" W. T. WEAVER, Mangravel, Loose .....	Butcher
MESSRS. W. ALLAN & CO., Tacket Street, Ipswich .....	Butchers
MR. T. ANDREWS, High Street, Kings Lynn .....	Butcher
" BOBBINS, Lowestoft .....	Butcher



# LION *Quick Action* SCALE



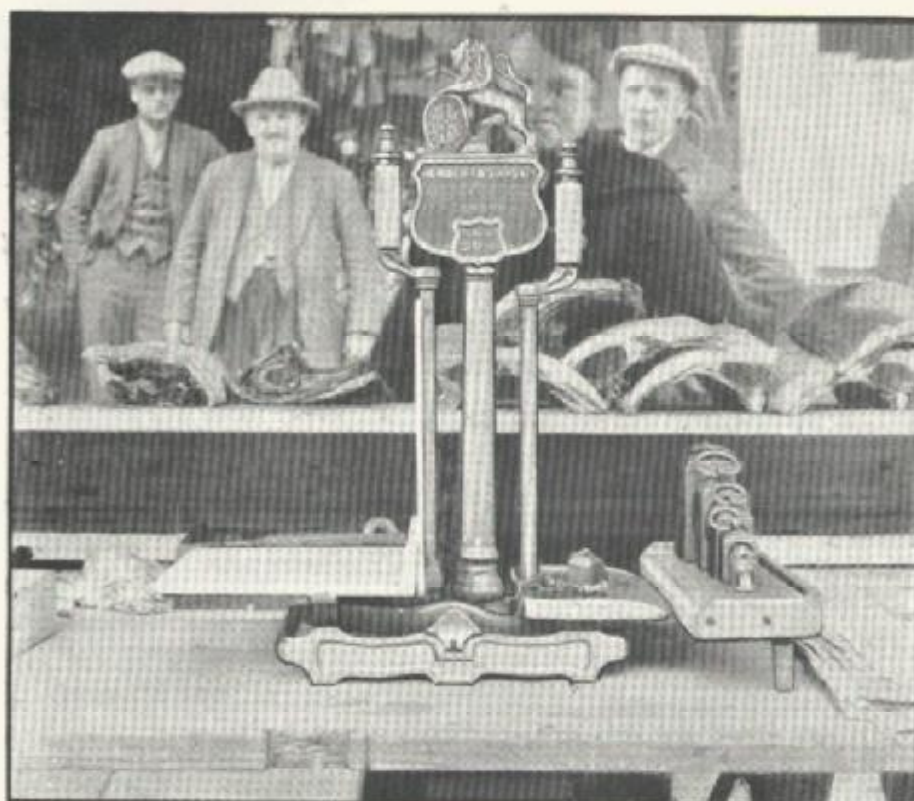
Mr. William Johnson, Butcher, Gateshead, Newcastle-on-Tyne.

## "LION" USERS.

MR. BARWOOD, Kings Street, Great Yarmouth.....	Butcher
" BELLAMY, Bell Road, Gorleston-on-Sea.....	Butcher
" BUSCALL, Spring Road, Ipswich.....	Butcher
" BOOTY, High Street, Ipswich.....	Butcher
" BREWSTER, Newton Road, Ipswich.....	Butcher
" BARE, Magdalen Street, Colchester.....	Fishmonger
MESSRS. BROWNIE & SON, Coggeshall, Essex.....	Butchers
MR. F. M. BAILEY, Sudbury, Suffolk.....	Butcher
MESSRS. COOK & SONS, Bevan Street, Lowestoft.....	Butchers
MR. CROSS, Clay Street, Soham.....	Butcher
" COLUMBUS, Lavenham.....	Butcher
" J. CLARKE, Orwell Place, Ipswich.....	Butcher
MESSRS. H. CUTTS & SON, Witham.....	Fishmongers
MR. DEEKS, Tacket Street, Ipswich.....	Pork Butcher
" DAY, Broomfield Road, Chelmsford.....	Butcher
" DENT, Hilgay, Norfolk.....	Butcher
" DAWSON, Magdalen Street, Norwich.....	Butcher
" EMSLEY, Wangford, Suffolk.....	Butcher
" FISH, Butter Market, Ipswich.....	Fruiterer
MESSRS. FOSTER BROS, Coggeshall, Essex.....	Butchers
MR. GODHOLD, Northgate Street, Bury St. Edmunds.....	Butcher
" GILBERT, Vernon Street, Ipswich.....	Butcher
" GREENWOOD, Magdalen Street, Colchester.....	Butcher
MESSRS. H. GREEN & SON, Moulsham Street, Chelmsford.....	Butchers
MR. GREENWOOD, Harwich.....	Butcher
" JUBY, Upper Brook Street, Ipswich.....	Butcher
" JEANS, Dovercourt.....	Grocer
MESSRS. JOHNSON & SON Westgate Street, Peterborough.....	Butchers
MR. LEE, Littleport.....	Butcher
MESSRS. LEONARD & SON, Soham.....	Butchers

HERBERT & SONS, LTD. 6 & 7, WEST SMITHFIELD, LONDON.E.C.1

# USERS



"LION" Scales are used extensively on stalls and open markets.  
Nine are in use in East Street, Walworth.

## " LION " USERS.

MESSRS. LUCKIN SMITH, High Street, Colchester	Grocers
" LUCKIN SMITH, High Street, Chelmsford	Grocers
THE LOWESTOFT CO-OPERATIVE SOCIETY, Lowestoft	
MR. MANN, Long Wyres, Colchester	Butcher
MESSRS. MORTON & SON, Wangford, Suffolk	Butcher
MR. NORMAN, Southwold, Suffolk	Butcher
" PIDDSEY, Coggeshall, Essex	Butcher
" H. REIDER, Littleport, Cambs.	Butcher
" RACKHAM, London Road, Lowestoft	Butcher
" SWANN, Clapham Road, Lowestoft	Butcher
" SMITH, Blanche Street, Ipswich	Butcher
" H. SMITH, Corporation Road, Chelmsford	Butcher
" SMITH, Aldeburgh-on-Sea	Butcher
" A. SCOTT, Cranmoor Terrace, Kings Lynn	Butcher
" SPECKLEY, Crowland	Butcher
" SOUTHERLAND, Norfolk Street, Kings Lynn	Butcher
MESSRS. H. WRIGHT & SON, Duke Street, Chelmsford	Butcher
MR. WRIGHT, St. Helens Street, Ipswich	Butcher
" YATES, Norfolk Street, Kings Lynn	Butcher
MESSRS. MOORE'S STORES, Newcastle	
" LAW'S STORES, Newcastle	
" CURRY'S STORES, Newcastle	
" DUNCAN'S STORES, Newcastle	



# LION Quick Action SCALE



Messrs. Hook & Son, Tea Blenders, Cheapside, Taunton.

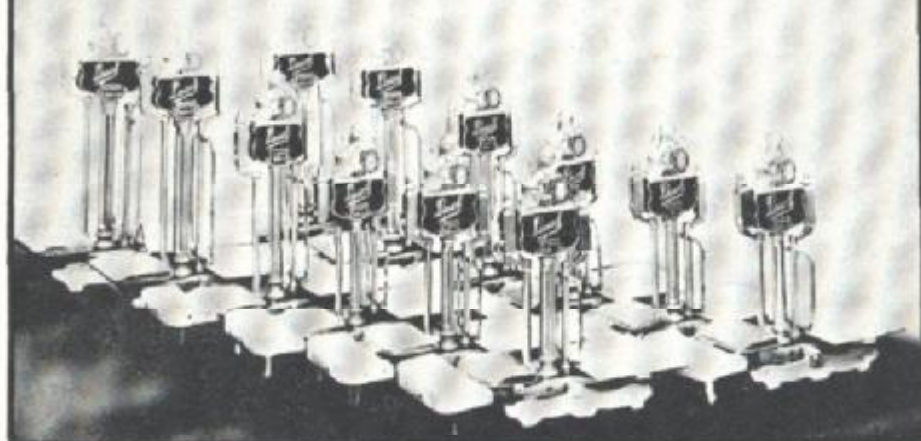
## "LION" USERS.

MESSRS. WALTER WILLSON, LTD., Newcastle .....	
" LOCHABER & DISTRICT CO-OPERATIVE SOCIETY, LTD.....	
THE INVERNESS CO-OPERATIVE SOCIETY, LTD.....	
MR. J. E. LUNN, Huddersfield .....	
MESSRS. SLACK'S CASH STORES, Huddersfield.....	
MR. A. THORNBY, Preston .....	
MESSRS. E. BOOTH & Co., Preston .....	
" MARSDEN, LTD., Nottingham.....	
THE STROUD CO-OPERATIVE SOCIETY, LTD., Stroud.....	
MR. S. ASKEW, Ashton Road, Oldham .....	Butcher
" R. BOOKER, Butler Street, Manchester.....	Butcher
" F. T. BOURNE, Tarton Street, Salford, Manchester.....	Fishmonger
" F. BELL, Rushford Street, Longsight, Manchester.....	Grocer
" BARKER'S MEAT MARKET, Ancoats, Manchester.....	Butcher
" I. BLOOR, Irlam O' th' Heights .....	Grocer
" S. BLACKBURN, Lees Street, Nr. Openshaw.....	Fruiterer
MESSRS. E. BOOTH & Co., Preston .....	Grocers
MR. E. BREWER, Preston .....	Grocer
" N. BOTTOMLEY, Ashton New Road, Beswick.....	Fruiterer
" R. L. BROWN, Stretford Road, Hulme.....	Tobacconist
THE COLNE & DISTRICT CO-OPERATIVE SOCIETY, Colne.....	
MR. C. COYLE, South Porter Street, Ancoats, Manchester .....	Grocer
" CLIFFE, Altrincham .....	Butcher
MESSRS. COUPE & HILKIRK, Altrincham .....	Grocers
MR. J. A. CHARLESWORTH, Rochdale Road, Manchester .....	Butcher
" S. DOOK, Regent Road, Salford.....	Butcher
" J. DALEY, Ancoats, Manchester .....	Grocer
" B. FORREST, Whitefield .....	Grocer
" ELLIOTT, West Derby Road, Liverpool.....	Butcher
" F. FREEDMAN, Chorlton-on-Medlock, Manchester.....	Fruiterer
" J. GREGORY, Upper Medlock Street, Manchester.....	Grocer
" W. GOLDBERG, C.-on-M., Manchester.....	Grocer and Fruiterer
MISS GOODWIN, Brunswick Street, Manchester .....	Grocer
MESSRS. J. H. GREENHALGH & SON, Market Hall, Bolton.....	Grocers
MR. V. HOWE, Rosamund St., Man'ter .....	Fishmonger and Fruiterer

HERBERT & SONS, LTD. 6 & 7, WEST SMITHFIELD, LONDON.E.C.1

# USERS

GROUP OF SCALES MADE TO THE ORDER OF ANOTHER LARGE FIRM OF PROVISION MERCHANTS WHO HAVE DISCARDED AUTOMATIC SCALES IN FAVOUR OF "LION" QUICK ACTION SCALES



## "LION" USERS.

MR. J. HOLLAND, Bradford Street, Ancoats, Manchester .....	Grocer
.. W. HIBBERT, Ardwick, Manchester .....	Fish and Fruit
.. H. JACKSON, Lees Road, Oldham .....	Butcher
.. WM. JONES, Bridge Street, Chester .....	Grocer
.. A. A. KING, Princess Road, Manchester .....	Tobacconist
.. KERSHAW, Brook Street, C.-on-M., Manchester .....	Butcher
.. J. LAVLAND, Ashton Old Rd., Manchester ..	Fishmonger & Fruiterer
.. WM. LOMAX, Albion Street, Radcliffe .....	Butcher
.. MEADOWCROFT, C.-on-M., Manchester .....	Fishmonger & Fruiterer
.. C. MORGAN, Ellor Street, Salford .....	Butcher
.. WM. MOLE, Walmer Street, Rusholme, Manchester .....	Fruiterer
.. G. ORME, Middleton, Manchester .....	Butcher
.. H. OVEREND, Newton Heath, Manchester .....	Fish and Fruiterer
.. R. PARKER, Butler St., Manchester .....	Fishmonger and Fruiterer
.. E. ROURKE, Butler Street, Manchester .....	Butcher
.. J. G. ROSS, Oldham Road, Manchester .....	Butcher
.. J. READ, Fairfield Street, Ardwick, Manchester .....	Tobacconist
.. J. S. SHERBURNE, Stretford Road, Manchester .....	Fruiterer
.. C. J. STANLEY, Regent Road, Salford .....	Fruiterer
.. D. SWALES, Ambush Street Manchester .....	Fishmonger & Fruiterer
.. D. SWALES, Ashton Old Road, Manchester ..	Fishmonger & Fruiterer
.. E. SAUNDERS, Princess Street, Rusholme, Manchester .....	Butcher
.. R. SHORE, Stephens Street, Salford .....	Butcher
.. W. J. STAMMERS, Bradford Street, Manchester .....	Butcher
.. H. SMETHURST, Butler Street, Manchester .....	Tripe Dresser
.. J. T. SEDGWICK, Embden Street, Hulme, Manchester .....	Butcher
.. TRAVIS, Moston, Manchester .....	Butcher
MRS. C. TAYLOR, Aston Old Road, Manchester ..	Fruiterer
MR. C. TAYLOR, Butler Street, Ancoats, Manchester .....	Butcher
.. F. J. WHITTINGHAM, Butler Street, Manchester .....	Butcher
.. T. WILLIS, Chester Street, Hulme, Manchester .....	Butcher
MISS D. M. WALSH, Mauldeth Rd., West M'ter ..	Fishmonger & Fruiterer
THE WINDERMERE CO-OPERATIVE SOCIETY .....	
MR. SCHOFIELD, Bradshawgate, Bolton .....	Butcher
.. REDDINGTON, Butler Street, Ancoats, Manchester .....	Butcher



# LION *Quick Action* SCALE

## Some Traders who have replaced Auto's by "LION" Quick Action Scales

by Mr. ATKINS, 9 Thrale Rd., Mitcham Lane, Streatham Park	Butcher
MESSRS. ALDRIDGE & SON, Albion St., Rotherhithe	Butchers
Mr. H. AXON, 8, High Street, Brentwood, Essex	Butcher
MESSRS. BANKS & SON, 109, Hampstead Road, N.W.	Butchers
Mr. E. BRUNNING, 46, Mayes Road, Wood Green	Butcher
MESSRS. J. BOLTON, LTD., (all branches), West Smithfield	Butchers
Mr. J. BISHOP, 17, Wembley Hill Parade, Wembley	Fruiterer
" C. BROWN, 3, Monkville Parade, Golders Green	Fruiterer
" E. CHAPMAN, 116, St. James Street, Brighton	Butcher
" CROUCH, 287, Crystal Palace Road, East Dulwich	Butcher
" CORKE, 54, Red Lion Street, Holborn	Butcher
" CHILDS, 149, High Street, Peckham S.E.15	Butcher
" A. W. CLARK, 494, Kingston Road, Raynes Park	Butcher
" A. J. CONNELL, 48, Church Road, Acton	Butcher
" COOPER, 69, Lupus Street, Pimlico W.	
" COOMBES, 584, Barking Road, Plaistow	Confectioner
" H. CHURCHILL, 115, Wood Street, Walthamstow	Butcher
" F. E. CORK, 30, Canon Hill, Old Southgate	Butcher
" L. G. CHAPMAN, White Hart Lane, Tottenham	Fruiterer
" A. E. CLAPSON, 34, North Street, Islington	Butcher
" JAMES DIACK, 6, Short Loamings, Aberdeen	Grocer
" DENT, 304, Camberwell Road, S.E.5.	Provisions
" DODD, 110, High Street, New Southgate	Fishmonger
" H. E. DOWNEY, 505, High Road, Leytonstone	Fishmonger
" J. EDWARDS, 211, Seven Sisters Road, N.	Butcher
" D. ELLIS, 9, West Derby Road, Liverpool	Butcher
" FRANCIS, 131, Barking Road	Butcher
THE FOLKESTONE CO-OPERATIVE SOCIETY, Dover Road, Folkestone	
Mr. S. FINE, 5, East Street, Walworth	Butcher
" F. GRIFFITHS, 6, High Street, South Norwood, S.E.	Butcher, etc.
" GIBBS, 78, Askew Road, Shepherds Bush, W.12	Butcher
" A. E. GOOD, 159, St. Albans Road, Watford	Butcher
" W. HUNTER, 235, Lower Road, Rotherhithe	Butcher
MESSRS. HORFIELD FISH MARKET, 275, Glos. Rd., Bristol	Fishmongers
" HAWES & SON, 249, Clapham Road, Stockwell, S.W.9.	Butchers
Mr. H. HORROCKS, 109, School Hill, Bolton	Butcher
" HEDGES, 178, Bethnal Green Road, E.	Butcher
MESSRS. HEARN & SON, Northcote Rd., Clapham Junc.	Butchers
Mr. R. HAMMER, 46, Rodney Road, Walworth	Butcher
MESSRS. HORTON BROS., 115, St. Albans Road, Watford	Butchers
Mr. U. HUBBARD, 31, Charlton Street Market, Euston	Butcher
" F. W. HALL, 36, Nile Street, Hoxton	Butcher
" R. HARMER, 168, High Street, Leytonstone	Butcher
" JOYCE, 531, Kingsland Road, N.	Butcher
" KNOWLDEN, Limehouse, E.	Butcher
MESSRS. E. LAWES & Co., The Minories, E. and Branches	Grocers
Mr. V. LINTOTT, High St., Berkhamstead, Hertford, Herts.	Butcher
" LUXTON, 47, High Street, Poplar	Grocer
" MARSH, 20, Sunnyhill Road, S.W.	Butcher
" MARSHALL, 92, Craven Park Road, Harlesden	Butcher
" H. W. MUNRO, 30, Sidney Street, Goswell Road, E.C.1.	Butcher
" H. MORTEMORE, 8, Goldsmith Lane, Kingsbury, Mddx.	Grocer

HERBERT & SONS, LTD. 6 & 7, WEST SMITHFIELD, LONDON, E.C.1

# REPLACE AUTO'S



MR. A. PEACOCK, 104, Princess Avenue, Watford .....	Butcher
.. W. G. PARTRIDGE, 22a, Sun Street, Waltham Abbey .....	Butcher
.. J. M. PRATT, 23, Trinity Road, Tooting .....	Butcher
MESSRS. J. PARSONS, Bude Supply Stores, Princess Street, Bude .....	Grocers
MR. W. T. POCOCK, 401, Mare St., Hackney, & Branches .....	Fishmonger
.. J. N. PARMINTER, 3, Goswell Road, Aldersgate, E.C.1 .....	Butcher
.. J. C. RANDALL, The Broadway, Crouch End .....	Butcher
.. A. ROYLE, 16, High Road, Lee, Lewisham .....	Butcher
.. G. READ, 136, Albany Road, Camberwell .....	Butcher
.. A. E. ROLFE, 102, Weston Park, Crouch End .....	Butcher
.. H. A. SPENCER, 24, High Street, Hornsey, N. ....	Butcher
.. STEWART, 200, George Street, Aberdeen .....	Butcher
.. SOUTHORNE, 44, Abbeyville Road, Clapham .....	Butcher
.. SENIOR, Mill Lane, Battey Carr, Yorks. ....	Butcher
.. SKINNER, Princes Risborough, Bucks. ....	Butcher
.. E. R. SNOW, 1, Myrtle Road, East Ham Market .....	Butcher
.. C. E. SHORT, 17, West Street, Frittlewell Southend .....	Butcher
.. E. C. THOMAS, 3, Bedford Hill, Balham, S.W. ....	Butcher
.. A. TERRY, London Road, Amersham, Bucks. ....	Grocer
MESSRS. WEST BROS., 6, Crouch Hill, London, N. ....	Butchers
MR. WESTON, 31, Chalk Farm Road, N.W.1 .....	Butcher
.. WRIGHT, 212a, Hotwell Road, Bristol .....	Butcher
.. A. G. WRIGHT, 96, Wick Street, Homerton, E.9. ....	Pork Butcher
MESSRS. WEBBER BROS., 166, Gt College St., Camden Town .....	Butchers
MR. WRIGHT, 177, Southampton Street, Camberwell .....	
.. WIDDOWSON, Vicarage Lane, Stratford .....	Butcher
MESSRS. FRED. WRIGHT (Butchers) LTD., W.C.1 and Branches.	
.. WHEELER, High Street, Watford .....	Confectioner



# LION Quick Action SCALE

## WEIGHING MACHINE DISPUTE.

### Indicator for Short Men.

Mr. J. W. Ward, County Council Inspector of Weights and Measures, said the weighing-machine in question was a spring-weighing machine, fitted with a rotating dial. When the shop was started by Mr. F. H. Marchant on Saturday evening, June 13, the weighing-machine was found to be an error (but in the seller's favour).

Defendant said that the error was due to the fact that the seller's side, being higher than on the purchaser's, so that the error was only apparent according to the level on which the eye saw the indicator. A full trial would make a proper comparison.

The machine was inspected twice a year by the makers.

Mr. Ward said that the machine was on the machine when on the seller's side, and that the error was only apparent according to the level on which the eye saw the indicator. A full trial would make a proper comparison.

## TWO SHOPKEEPERS IN COURT.

### Incorrect Weight.

#### A LITTLE TOO MUCH BETTER THAN TOO LITTLE.

The most notable appeared at the Borough Police Court on Wednesday morning in cases relating to the sale of goods of incorrect weight.

Mr. J. W. Ward, County Council Inspector of Weights and Measures, said the machine was found to be an error (but in the seller's favour).

## UNJUST SCALE: FIRM FINED AT PRESTON.

Mr. J. W. Ward, County Council Inspector of Weights and Measures, said the machine was found to be an error (but in the seller's favour).

## SHORT WEIGHT.

### DEALER FINED.

#### WEIGHING MACHINE.

Mr. J. W. Ward, County Council Inspector of Weights and Measures, said the machine was found to be an error (but in the seller's favour).

## INCORRECT WEIGHING MACHINE.

### Owner Fined.

#### Penalty of £1.

Mr. J. W. Ward, County Council Inspector of Weights and Measures, said the machine was found to be an error (but in the seller's favour).

## TRADING FIRM FINED AT

### At Widows.

Mr. J. W. Ward, County Council Inspector of Weights and Measures, said the machine was found to be an error (but in the seller's favour).

## CONFESIONER SUMMONED

### At Kensington Petty Sessions on Tuesday.

Mr. J. W. Ward, County Council Inspector of Weights and Measures, said the machine was found to be an error (but in the seller's favour).

## A WEIGHING MACHINE TESTED

### At Northampton.

Mr. J. W. Ward, County Council Inspector of Weights and Measures, said the machine was found to be an error (but in the seller's favour).

## UNJUST SCALE.

### MORE TRADE FINED.

Mr. J. W. Ward, County Council Inspector of Weights and Measures, said the machine was found to be an error (but in the seller's favour).

## Automatic Scales Prosecution.

Mr. J. W. Ward, County Council Inspector of Weights and Measures, said the machine was found to be an error (but in the seller's favour).

HERBERT & SONS, LTD. 6 & 7, WEST SMITHFIELD, LONDON, E.C.1

# AVOID TROUBLE

## MACHINES THAT GO WRONG

Short Weight Means Fines for Traders

### BUTCHER WARNED

The liability of automatic weighing machines used in many retail shops to get out of adjustment when moved was alleged in the course of the prosecution of traders at the Kensington Police Court yesterday. It was stated that a machine at the butcher's shop of **James H. Jones** in the registered for several months and that when the scale was moved it weighed 125 lb. instead of 100 lb. The machine was found to be out of adjustment and the defendant was warned that if it was not put right he would be prosecuted.

Defendant's solicitor said that the machine was in a very large way of London and had several shops in it. It was found that the machine was out of adjustment and the defendant was warned that if it was not put right he would be prosecuted.

The machine was found to be out of adjustment and the defendant was warned that if it was not put right he would be prosecuted.

The machine was found to be out of adjustment and the defendant was warned that if it was not put right he would be prosecuted.

## UNJUST SCALES

The defendant was found to be out of adjustment and the defendant was warned that if it was not put right he would be prosecuted.

The machine was found to be out of adjustment and the defendant was warned that if it was not put right he would be prosecuted.

The machine was found to be out of adjustment and the defendant was warned that if it was not put right he would be prosecuted.

The machine was found to be out of adjustment and the defendant was warned that if it was not put right he would be prosecuted.

The machine was found to be out of adjustment and the defendant was warned that if it was not put right he would be prosecuted.

The machine was found to be out of adjustment and the defendant was warned that if it was not put right he would be prosecuted.

## UNJUST WEIGHING MACHINE.

The machine was found to be out of adjustment and the defendant was warned that if it was not put right he would be prosecuted.

The machine was found to be out of adjustment and the defendant was warned that if it was not put right he would be prosecuted.

The machine was found to be out of adjustment and the defendant was warned that if it was not put right he would be prosecuted.

The machine was found to be out of adjustment and the defendant was warned that if it was not put right he would be prosecuted.

The machine was found to be out of adjustment and the defendant was warned that if it was not put right he would be prosecuted.

The machine was found to be out of adjustment and the defendant was warned that if it was not put right he would be prosecuted.

The machine was found to be out of adjustment and the defendant was warned that if it was not put right he would be prosecuted.

## TEA UNDER WEIGHT.

ALL CRACKS BLAME AUTOMATIC SCALE.

The machine was found to be out of adjustment and the defendant was warned that if it was not put right he would be prosecuted.

## FISHMONGER FINED £5 FOR UNJUST SCALES.

Cautioned Five Times

The machine was found to be out of adjustment and the defendant was warned that if it was not put right he would be prosecuted.

The machine was found to be out of adjustment and the defendant was warned that if it was not put right he would be prosecuted.



# TESTIMONIALS

TELEPHONE RODNEY 3176



HOME-MADE SAUSAGES  
FRESH DAILY

**E. SMITH,**  
CASH & FAMILY  
BUTCHER.  
**317, WALWORTH ROAD, S.E.**

ENGLISH, SCOTCH AND SELECTED CHILLED BEEF  
CHOICE DEVONSHIRE PORK, SCOTCH MUTTON AND CANTERBURY LAMB

Messrs. Herbert & Sons Ltd.,  
6 & 7, West Smithfield.  
London. E. C. 1.

Dear Mr. Bagrit,

I am sure you will be interested to hear how  
delighted I am with the three White Porcelain  
"LION" Scales you installed here some time ago.

Not only do my customers remark about the  
cleanliness of these scales, their imposing  
appearance, and how nice it is to see they are  
getting fair weight, but owing to the  
sensitivity of these machines, I can say that  
I am saving a good deal of money.

Please have no hesitation in referring any  
prospective buyer to me, as I can testify that  
the installation of these "LION" Scales has  
resulted in increased business as well as  
additional profit for me.

Yours very truly,

*E. Smith*

HERBERT & SONS, LTD. 6 & 7, WEST SMITHFIELD, LONDON. E.C.1

# TESTIMONIALS

E. Cullen,  
Grocery and Provision Stores,  
9, Ashcroft Road,  
Bow, E.

"I have used your 'LION' Scales for 12 months, and I am very happy I have purchased them. They have given me every satisfaction and my customers."

Charles Lee,  
Fruiterer and Greengrocer,  
100, Chingford Mount Road,  
Walthamstow, E.17.

"I have much pleasure in recommending your 'LION' Fruit and Potato Scales. I find them of great value to me as a Fruiterer and Greengrocer. They give me the greatest satisfaction."

M. Foster,  
105, West Road, West Ham, E.

"I have used others but find there is none to beat the 'LION'."

J. A. Smith,  
Grocer and Confectioner,  
77, London Road, Plaistow, E.

"I have been using a 'LION' 10 lb. Scale for about a year and am fully satisfied with my purchase."

S. J. Jackson,  
General Stores,  
28, Baxter Road, Essex Road, N.1.

"I have used your 'LION' Scale for the last 2 years: this scale pays for itself."

R. Garraway,  
72, Victoria Dock Road,  
Canning Town, E.16.

"I am using the 'LION' Quick Action Scale, which I find is an improvement on any other scale, and I have used several previously. May I add that the people feel satisfied with the balance scales, whereas with the no-spring scales, most people don't understand them and leave the shop dissatisfied. I think the 'LION' is a wonder of modern science."



# TESTIMONIALS

H. J. Smith,  
136, Katherine Road, E.6.

"Having used your 'LION' Scales for over two years, I would like to state that this scale has given entire satisfaction, and at no time have I had cause to doubt. I consider they are one of the best working propositions on the market."

Wells & Son,  
Butchers,  
1, Bell Street,  
Romsey, Hants.

"I am a strong advocate of your scale, and always have been, and have had many arguments over same."

S. Barrell,  
30, Winmarleigh Gardens,  
Leigh, Lancs.

"With reference to my successes in the Tea and Coffee Weighing Competitions at the Grocers' Exhibition I have never previously used a 'LION' Scale, but I found the 'LION' Scales on which I won my prizes very easy to handle and for quick and accurate weighing, I think they are perfect. If I can have my choice in future it will always be a 'LION.'"

W. H. Lunn,  
30, Commerce Road,  
Wood Green, N.22.

"With regard to the 'LION' Scale used by me in the Tea Weighing Competition at the recent Grocers' Exhibition, it was the first time I had seen a Tea Scale of this description, and I found it very easy to weigh with, owing to its very quick action."

E. Eade,  
18, Holden Park Road,  
Southbrough,  
Tunbridge Wells.

"I was very pleased with your scale which I used in the Competitions, I think it the best I have ever used for quick turning and accuracy."

HERBERT & SONS, LTD. 6 & 7, WEST SMITHFIELD, LONDON, E.C.1

# TESTIMONIALS

A. Higgs,  
42, Brook Road, N.16.

"I was again successful in the weighing contest at the London Grocers' Exhibition. The 'LION' Machine I used was without doubt the finest Weighing Machine I have ever seen. Although I hold eleven diplomas for weighing contests on all kinds of machines, including Automatic, the action of your scales was by far the most perfect I have ever used. It was sensitive enough for a Jeweller."

L. D. Balment,  
46, Woodville Road,  
Cathays, Cardiff.

"I have nothing to say except to voice my whole-hearted admiration for such a weighing instrument. I knew it could be relied upon implicitly—my confidence in them not being misplaced as proved by the fact that I won the First Prize.

Nothing that I can add can make my admiration for the 'LION' Scale—'The King of Scales' I might term it—more impressive, and I shall always recommend them to my friends."

F. Atkinson,  
Pharmacist,  
116, Denmark Hill, S.E.5.

"I procured a set of your 'LION' Scales a few months ago, and I should like to say that I find them more accurate than any other that I use."

H. Adams & Son,  
Family Butchers,  
129, High Street, Hornchurch.

"Since installing your 'LION' Quick Action Scale, I am convinced I have increased my trade and saved money. I can thoroughly recommend them."

A. Hiscock,  
Fruiterer, Greengrocer and Nurseryman,  
37 and 39, Palmerston Road,  
Boscombe.

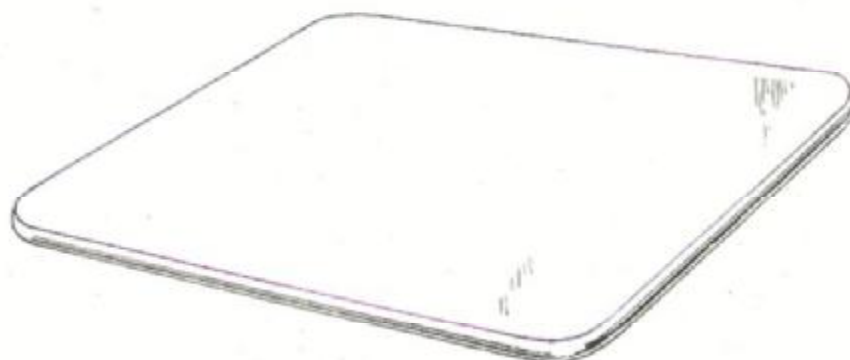
Dear Sir,

The Scales have arrived and are proving very satisfactory. In fact the Inspector happened to look in and thinks there is nothing like it on the market.

Please find enclosed cheque for same.



# LION *Quick Action* SCALE



Square Tuffo Glass. A hygienic fitting. Suitable for Butcher, Grocer, Dairy, Provisions, Cooked Meat, Baker.

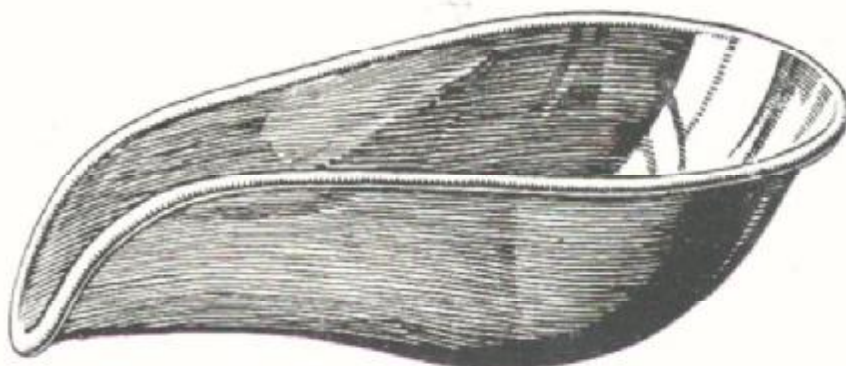


China Plate turned up at one end. Made also in Brass, Copper or Iron. Suitable for Butcher, Grocer, Dairy, Provisions, Cooked Meat, Baker.

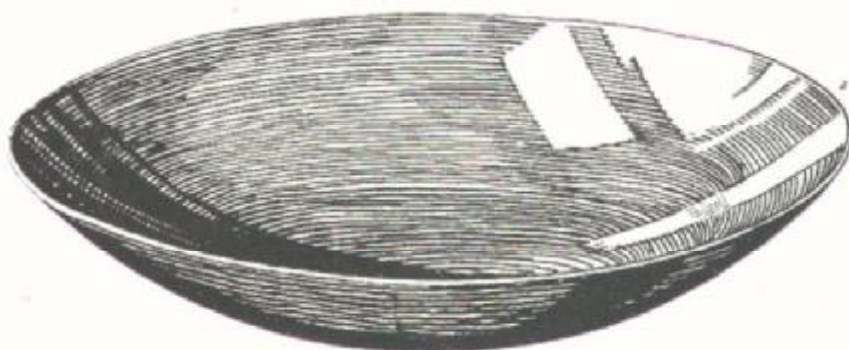


Oblong Pan. Made in Tin, Enamel, White Metal, Galvanised Steel or Stainless Steel. Suitable for Fishmonger, Fruiterer, Corn Chandler.

# GOODS FITTINGS



Pear-shaped Scoop. Made in White Metal, Brass, Copper or Galvanised Steel. Suitable for Confectioner and Grocer.



Round Concave Pan. Made in White Metal or Brass. Suitable for Tea, Rice and Tobacco Weighing.



Double-lip Scoop. Made in White Metal, Brass, Copper and Galvanised Steel. Suitable for Fruiterer, Grocer, Corn Chandler





Published by  
HERBERT & SONS, LTD.  
Weighing Machine  
- - Manufacturers, - -  
Sole Makers of the famous  
'Lion' Quick Action Scales.  
6 & 7, West Smithfield,  
- - London. E. C. 1. - -  
Scale Showrooms & Works  
204 & 206, Goswell Road,  
- - - E. C. 1. - - -  
'Phone : Central 8827  
Private Exchange 5 lines.  
and Clerkenwell 5700  
Private Exchange 2 lines.  
Telegrams : Ryteweight,  
London

# LION *Quick Action* SCALE

## Dimensions of "LION" Quick Action Scales Gold Bronze Models

	4 lb.	7 lb.	10 lb.
	inches	inches	ft. ins.
Height Overall .. .. .	17 $\frac{1}{4}$	20	1 10 $\frac{1}{2}$
Overall Length .. .. .	17	20	1 11 $\frac{1}{2}$
			inches
Overall Width .. .. .	8 $\frac{1}{2}$	10 $\frac{1}{2}$	10 $\frac{1}{2}$
Height of Plate from Counter ..	3 $\frac{1}{2}$	4	4 $\frac{1}{2}$
Size of Goods Plate .. .. .	7 x 8	8 x 9	9 x 10
Size of Weights Plate .. .. .	5 $\frac{1}{4}$ x 3 $\frac{3}{4}$	6 $\frac{1}{4}$ x 4 $\frac{1}{4}$	7 $\frac{1}{2}$ x 4 $\frac{3}{4}$
Size of Weights Board .. .. .	8 $\frac{1}{4}$ x 4	10 x 4	10 $\frac{1}{2}$ x 4 $\frac{3}{4}$
Overall Length without Weight Board	13	15 $\frac{1}{2}$	19
Weight .. .. .	20 $\frac{1}{4}$ lbs.	30 $\frac{1}{4}$ lbs.	40 lbs.

	20 lb.	30 lb.	40 lb.
	ft. ins.	ft. ins.	ft. ins.
Height Overall .. .. .	2 1 $\frac{1}{2}$	2 7	2 7
Overall Length .. .. .	2 2 $\frac{1}{4}$	2 5	2 8
	inches	inches	inches
Overall Width .. .. .	11 $\frac{1}{2}$	13 $\frac{1}{2}$	15
Height of Plate from Counter ..	4	4	4
Size of Goods Plate .. .. .	10 x 11	12 x 13	13 x 14
Size of Weights Plate .. .. .	9 x 5 $\frac{1}{2}$	10 x 6 $\frac{1}{2}$	11 x 6 $\frac{3}{4}$
Size of Weights Board .. .. .	13 $\frac{1}{2}$ x 5 $\frac{1}{4}$	13 $\frac{1}{2}$ x 5 $\frac{1}{4}$	15 x 5 $\frac{1}{2}$
Overall Length without Weight Board	20 $\frac{1}{4}$	23 $\frac{1}{4}$	26 $\frac{1}{4}$
Weight .. .. .	46 lbs.	67 lbs.	73 lbs.

Return Empties :—4 lb., 7 lb., 10 lb. and 20 lb. Cases are under  $\frac{1}{2}$  cwt. 30 lb., 40 lb. and 60 lb. Cases are under  $\frac{3}{4}$  cwt.



# LION *Quick Action* SCALE

## Dimensions of "LION" Quick Action Scales White Porcelain Models

	7 lb.	10 lb.
Height Overall .. .. .	ft. ins. 1 8 $\frac{1}{4}$	ft. ins. 1 11 $\frac{1}{4}$
Overall Length .. .. .	1 7 $\frac{3}{4}$	1 10 $\frac{1}{2}$
Overall Width .. .. .	inches 9 $\frac{1}{2}$	inches 10 $\frac{1}{2}$
Height of Plate from Counter ..	3 $\frac{3}{4}$	4
Size of Goods Plate .. ..	8 x 9	10 x 10
Size of Weights Plate .. ..	6 $\frac{3}{4}$ x 4 $\frac{1}{4}$	8 x 4 $\frac{1}{4}$
Size of Weights Board .. ..	10 $\frac{1}{4}$ x 4 $\frac{1}{2}$	10 $\frac{1}{4}$ x 4 $\frac{1}{2}$
Overall Length without Weight Board	15	17 $\frac{1}{2}$
Weight .. .. .	36 lbs.	47 lbs.

	20 lb.	30 lb.
Height Overall .. .. .	ft. ins. 2 1 $\frac{1}{2}$	ft. ins. 2 3
Overall Length .. .. .	2 0 $\frac{1}{4}$	2 3 $\frac{1}{2}$
Overall Width .. .. .	inches. 11 $\frac{1}{2}$	inches 13 $\frac{1}{2}$
Height of Plate from Counter ..	4	4
Size of Goods Plate .. ..	10 x 11	12 x 13
Size of Weights Plate .. ..	9 x 5	10 x 6
Size of Weights Board .. ..	12 $\frac{3}{4}$ x 5 $\frac{1}{4}$	12 $\frac{3}{4}$ x 5 $\frac{1}{4}$
Overall Length without Weight Board	18 $\frac{1}{2}$	21 $\frac{1}{2}$
Weight .. .. .	58 lbs.	76 lbs.

Return Empties:—4 lb., 7 lb., 10 lb. and 20 lb. Cases are under  $\frac{1}{2}$  cwt. 30 lb., 40 lb. and 60 lb. Cases are under  $\frac{3}{4}$  cwt.

# LION Quick Action SCALE

## Table of Scoop Capacities

### PEAR SHAPED SCOOP

Goods weighed Loose of :—	4 lb. " LION " Scale, 6" x 9½" will hold :—	7 lb. " LION " Scale, 8" x 11" will hold :—	10 lb. " LION " Scale, 9" x 13" will hold :—	20 lb. " LION " Scale, 12" x 16" will hold :—
Tea .. ..	¾ lb.	2 lbs.	3 lbs.	—
Coffee .. ..	1 lb.	2½ lbs.	3½ lbs.	—
Dried Fruits (Raisins, Currants, etc.)	1½ lbs.	4 lbs.	5½ lbs.	8 lbs.
Biscuits .. ..	¾ lb.	1½ lbs.	2½ lbs.	3½ lbs.
Potatoes .. ..	—	—	—	14 lbs.
Chocolates .. ..	¾ lb.	—	—	—
Flour .. ..	—	—	—	—

### DOUBLE LIPPED SCOOP

Goods weighed Loose of :—	4 lb. " LION " Scale, 7½" x 12½" will hold :—	7 lb. " LION " Scale, 8" x 13½" will hold :—	10 lb. " LION " Scale, 9" x 14" will hold :—	20 lb. " LION " Scale, 10" x 15" will hold :—
Tea .. ..	1 lb. 2 ozs.	1½ lbs.	2 lbs.	4 lbs.
Coffee .. ..	1½ lbs.	2 lbs.	2½ lbs.	3½ lbs.
Dried Fruits (Raisins, Currants, etc.)	2½ lbs.	3 lbs.	4 lbs.	6½ lbs.
Biscuits .. ..	1 lb.	1½ lbs.	2½ lbs.	3 lbs.
Potatoes .. ..	—	—	9 lbs.	14 lbs.
Chocolates .. ..	1½ lbs.	—	—	—
Flour .. ..	1½ lbs. half qtn.	3½ lbs.	7 lbs.	14 lbs.

### CONCAVE PAN

Goods Weighed Loose of :—	4 lb. " LION " Scale, 7" dia. will hold :—	7 lb. " LION " Scale, 9" dia. will hold :—
Tea .. ..	½ lb.	¾ lb.
Coffee .. ..	½ lb.	1 lb.
Dried Fruits (Raisins, Currants etc.)	1 lb.	1½ lbs.
Biscuits .. ..	½ lb.	1 lb.
Chocolates .. ..	—	—
Flour .. ..	—	—